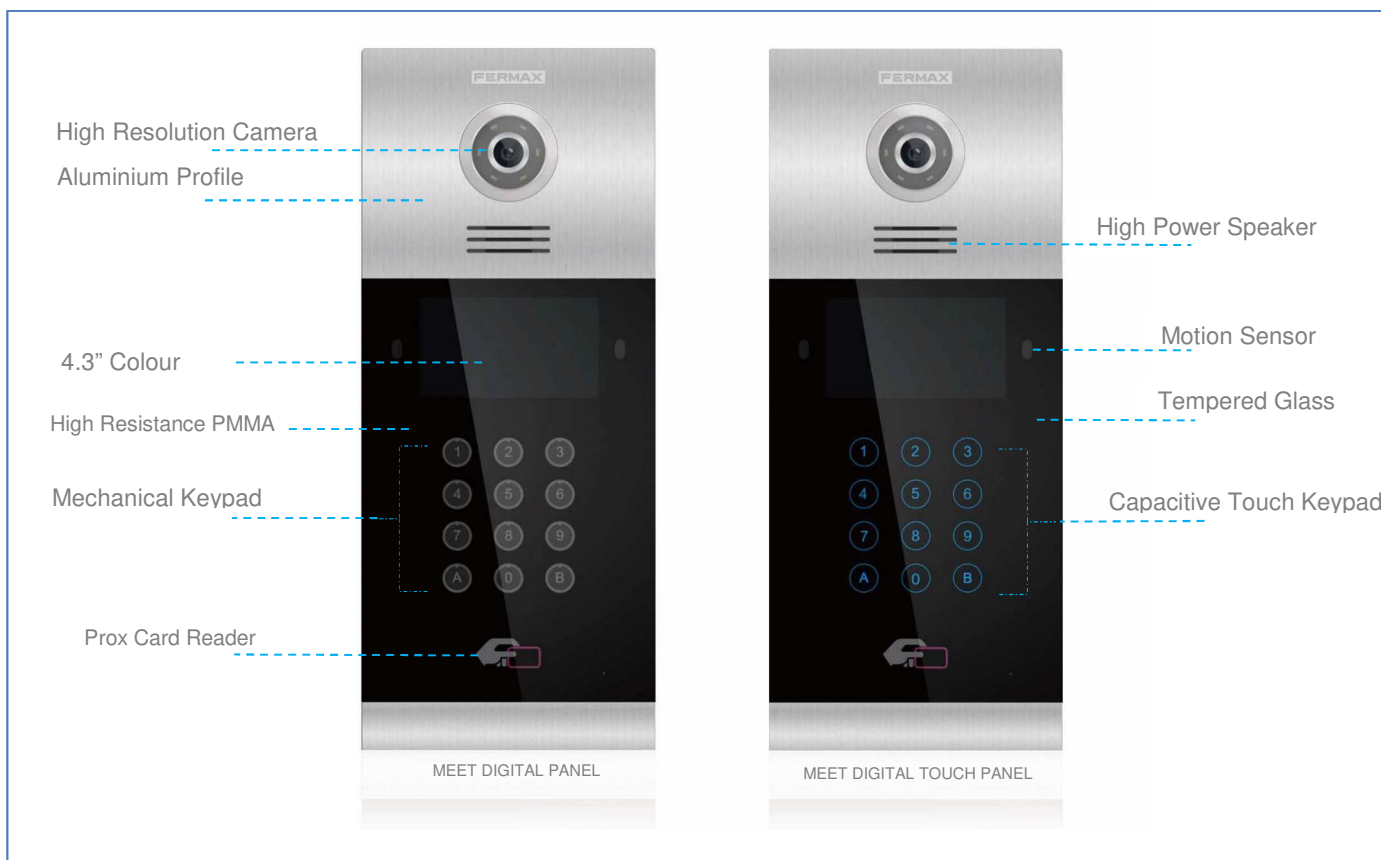


REF.9531/9532 DIGITAL VIDEO MEET PANEL



MEET panel is presented in two different versions: capacitive touch keypad and mechanical keypad. Its 4.3" TFT screen shows the user the steps to follow.

FEATURES

- Aluminum Profile
- High Resistance Tempered Glass (Touch Panel)
- Hands Free Audio Communication
- High Definition Colour Camera
- 4.3" Colour TFT Screen
- SIP P2P Protocol
- Wide Range Working Environment
- Android Modular Structure
- High Capacity CPU
- Access Control Integrated For 100.000 Cards
- RS485 Integration Ready (Lift Control)
- Available In 10 Languages
- Remote Firmware Update

FUNCTIONS

CALL TENANT

Visitors are able to call the desired tenant from the General Entry or the Block Entry.

General Entry: Visitors need to enter a 3 digits block number followed by a 4 digits apartment number. For example, if the addressee lives in block 10 apartment 101, the visitor shall enter: 0100101

Block Entry: Visitors need to enter a 4 digits apartment number. For example, if the addressee lives in apartment 201, the visitor shall enter: 0201.



CALL GUARD UNIT

If the visitor or tenant needs to be assisted they are able to call the main Guard Unit by entering the number 9901. This call can be made from both General Entry and Block Entry. Up to 98 different guard units can be called (9901...9998). For each guard unit it is possible to have 4 slaves associated guard units that will receive the same call.



TECHNICAL SPECIFICATIONS

System:

- CPU: Quad-core Cortex™-A7 1.5GHz
- GPU: Mali400MP2
- FLASH: 4GB
- SDRAM: 1GB DDR3L

Screen:

- 4.3" Color TFT
- Resolution 480*272 pixel
- View angle: 110° H, 90° V
- Contrast: 400/1
- Brightness: 200cd/m2

Audio Features:

- G.711 codec
- Audio OLR> 15dB

Camera:

- 1/3" CMOS Color
- 90o diagonal Lens: Horizontal 72°, Vertical 54°
- 1.3 Mega Pixels
- Minimum Illumination 0.5 LUX. Automatic white led activation
- AWB

Power Consumption:

- On standby: 250 mA
- Working: 500 mA

Working voltage:

- 12 VDC

Connectivity:

- Ethernet RJ-45 Connector
- RS485 connection port for lift control
- Secondary access control reader connection (Wiegand 26)
- Built in web server for configuration and remote management

Working Environment:

- Temperature: -10 °C.. + 70 °C
- Humidity: 20 – 80% (Non-condensing)
- IP 54
- IK 07

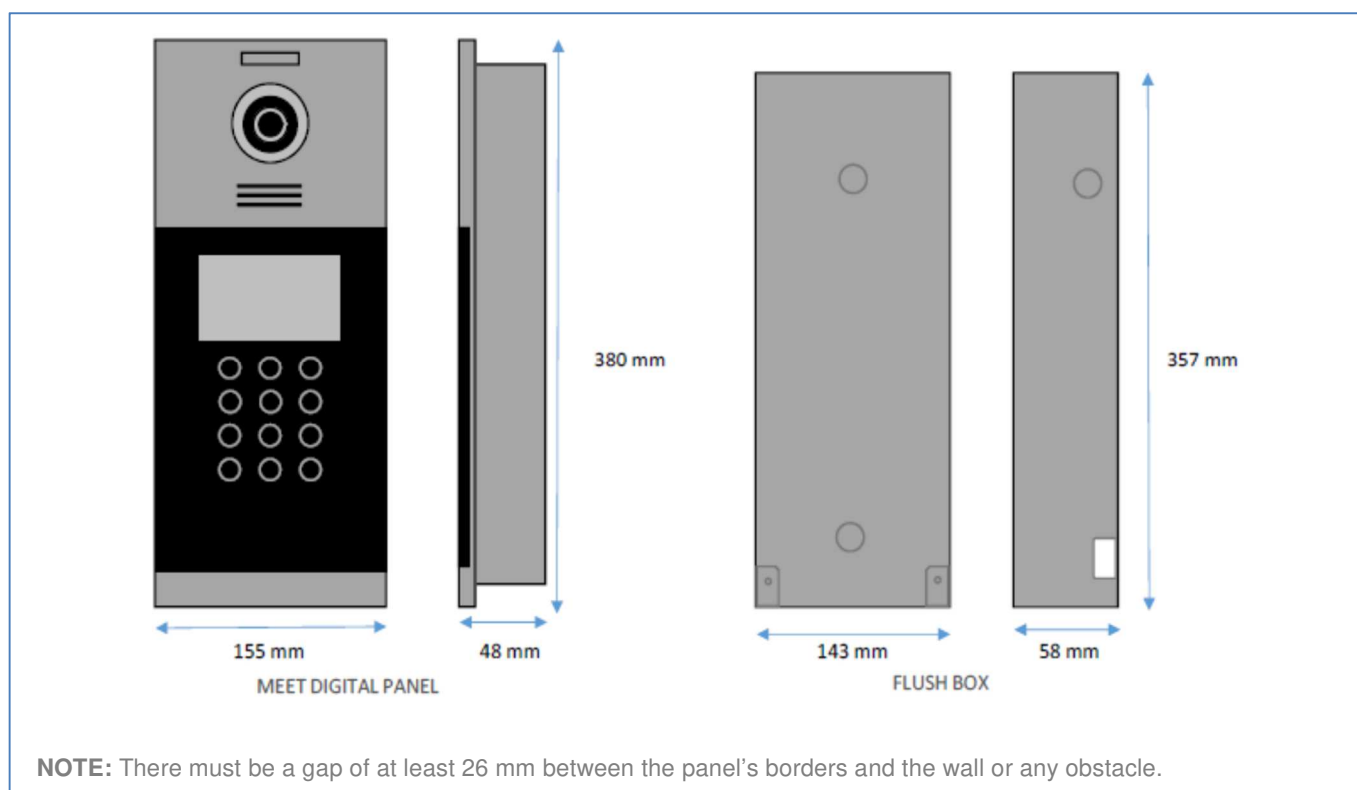
REFERENCES

Ref.9531 DIGITAL VIDEO MEET PANEL

Ref.9532 DIGITAL VIDEO TOUCH MEET PANEL

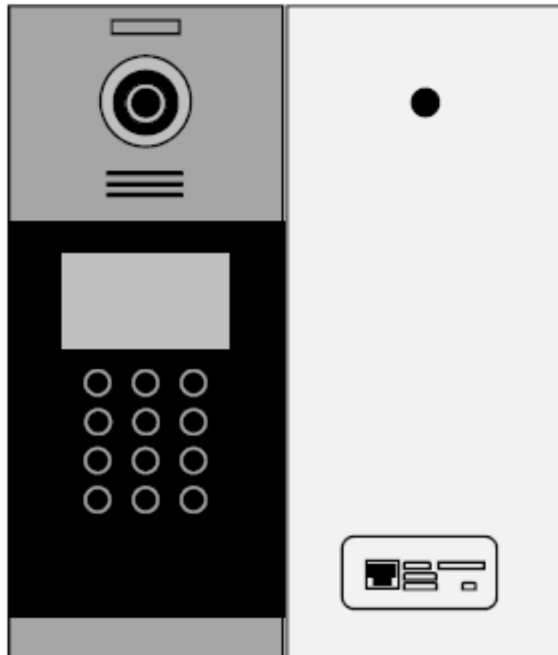
Ref.9542 MEET PANEL FLUSH BOX – L

DIMENSIONS (mm)



NOTE: There must be a gap of at least 26 mm between the panel's borders and the wall or any obstacle.

CONNECTIONS



RJ-45 10/100 Base -T Ethernet

+, -: 12 Vdc power supply input

BS, -, -, SP: Exit button and door sensor

NO, NO, C, C, NC: Door lock release connection

485+, 485-: RS485 serial port for lift control integration