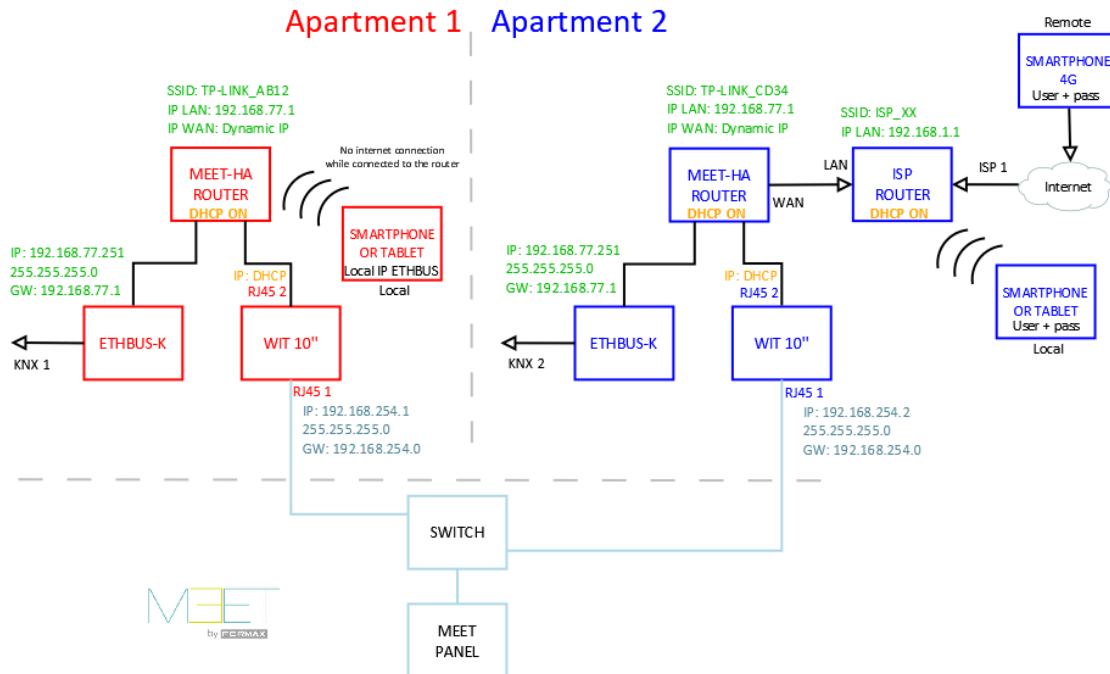


# MEET-KNX INTEGRATION

## General scheme



## Commissioning

### Required devices

One per apartment:

- Ref. 9861 / ETHBUS-K KNX WEBSERVER
- Ref. 14811 / WIT 10" monitor
- Ref. 9541 / MIO/WIT monitor connector
- Ref. 7668 / MEET-HA router

Generic devices:

- A laptop with the following software installed:
  - [SIDE KNX](#),
  - [Ingenium Tracker](#)
  - [Remote Desktop](#)
- Ref. 9873 / BPC-USB BUSING-USB gateway

## Steps

### Resume

<b>1. Office</b>	Router configuration	<ol style="list-style-type: none"> <li>MEET-HA router IP address: <b>192.168.77.1</b></li> <li>Wired connection of laptop and ETHBUS-K to MEET-HA router</li> </ol>
	ETHBUS-K configuration	<ol style="list-style-type: none"> <li><i>Tracker software</i> -&gt; Desired ETHBUS-K IP address: <b>192.168.77.251</b></li> <li>Visualization design: <i>SIDE-KNX</i></li> <li>Visualization upload to ETHBUS-K</li> <li>Connect MEET-HA router WAN port to any LAN port of your office router</li> <li><i>Remote desktop</i> -&gt; User creation (cloud connection)</li> <li>Verify user creation -&gt; control via smartphone</li> <li>ETHBUS-K: Annotate user &amp; password</li> </ol>
	WIT 10'' configuration	<ol style="list-style-type: none"> <li>Connect WIT 10'' RJ45 1&amp;2 to MEET-HA router</li> <li>Ingenium aSC APP installation</li> <li>APP -&gt; New local installation "apartment" -&gt; Local connection to IP address <b>192.168.77.251</b></li> <li>Visualization downloading -&gt; control via WIT 10'' monitor</li> </ol>
<b>2. Installation</b>	Verifications	<ol style="list-style-type: none"> <li>Connect: <ul style="list-style-type: none"> <li>WIT 10" RJ45 1 (left) to MEET network</li> <li>WIT 10" RJ45 2 (right) to any LAN port of MEET-HA router</li> </ul> </li> <li>Verify: <ul style="list-style-type: none"> <li>ETHBUS-K visualization via WIT 10" monitor</li> <li>Local control via smartphone connected to MEET-HA router WiFi connection</li> </ul> </li> </ol>
<b>3. Apartment</b>	Remote control (end user)	<ol style="list-style-type: none"> <li>ISP router installation</li> <li>Connect MEET-HA router WAN port to any LAN port of your ISP router</li> <li>Smartphone: Ingenium asC (Android) /iSC (iOS) installation. Connection using user&amp;password</li> </ol>

Office tasks are described below.

## 1. MEET-HA router

1. Connect your laptop to MEET-HA router
2. Open the following link <http://192.168.1.1>  
User: admin; Password: admin
3. Network > WAN > WAN Connection type = “Dynamic IP”

WAN Connection Type:

4. Network > LAN > Change default IP address to 192.168.77.1 and save changes

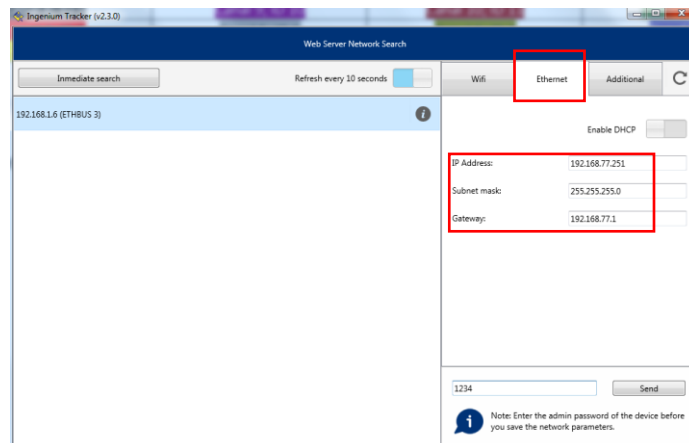
IP Address:   
Subnet Mask:

## 2. ETHBUS-K

### 2.1. Network parameters

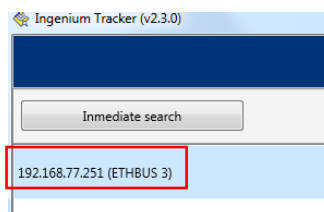
1. Connect the ETHBUS-K to MEET-HA router
2. Ingenium Tracker >

IP address: 192.168.77.251  
Subnet mask: 255.255.255.0  
Gateway: 192.168.77.1 (MEET-HA router)



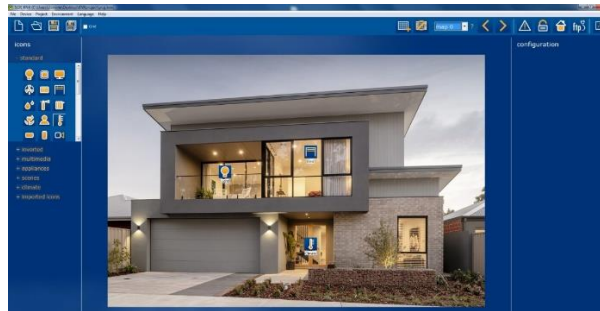
3. Password = “1234” and press “Send”

Result:



**2.2. Visualization design**

1. SIDE KNX > New project > PPL/ETHBUS project
2. Choose desired backgrounds (maps)
3. Add desired icons to each map



4. Once added, link all the icons with their corresponding KNX group addresses

More info: [https://besknx.com/pdf/MP\\_DS202000\\_en.pdf](https://besknx.com/pdf/MP_DS202000_en.pdf)

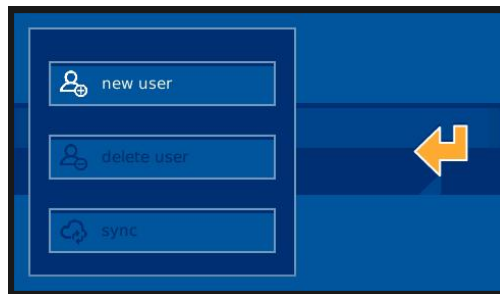
5. Upload the Project to ETHBUS-K: Project > Transfer project > FTP > IP addr.: 192.168.77.251

**2.3. User creation**

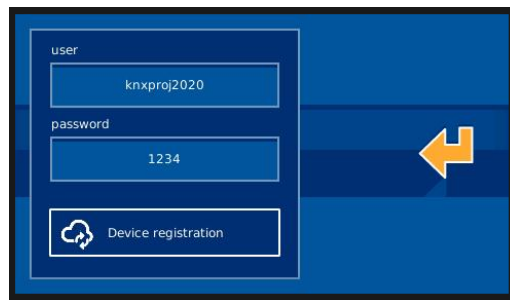
1. Connect MEET-HA router WAN port to any LAN port of your ISP router
2. Connect your laptop to MEET-HA router and verify internet connection is available
3. Remote Desktop > IP address: 192.168.77.251 (ETHBUS-K)



4. Press  (x2)
5. Press  (x2)
6. Press  (x2)
7. Press “New user” (x2)

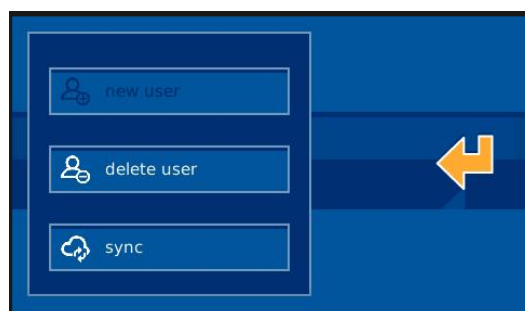


8. Create a new unique user + password using [A-Z,a-z,0-9] chars and press “Device registration” (x2)\*



9. Verify remote connection is possible with your smartphone: Ingenium aSC/iSC APP
10. ETHBUS-K: Annotate unique user & password

\*NOTE: In case of doing any change in the visualization, it is necessary to manually synchronize changes with the cloud by pressing “sync” button in this menu

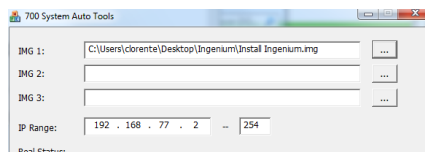


### 3. WIT 10'' monitor

Prerequisites:

- RJ45 1 (left) connected to MEET network (or temporarily to MEET-HA router)
- RJ45 2 (right) connected to any LAN port of MEET-HA router

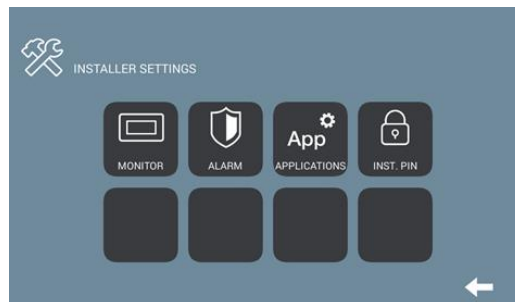
1. Download MEET system upgrade tool and Ingenium aSC:  
<http://owncloud.fermax.com:30772/s/CuuXGPbEnr1De8j/download>
2. Open MEET system upgrade tool and select "Install Ingenium.img"
3. IP Range: 192.168.77.2-254 (unknown MEET monitor IP address) > Press "Start"



Result:

Real Status: IP:192.168.1.44 IMG[Install Ingenium.img] Finished

4. Go to Installer menu and select APPLICATIONS menu



5. Select "Ingenium aSC" and assign it an icon
6. Select 2 additional apps and save changes

Result: Ingenium aSC app installed and visible in main menu.

7. Open Ingenium aSC and press "+" button
8. Installation parameters:  
Name: home, HA, ... (any name is OK)  
Connection: local  
IP: 192.168.77.251

9. Save changes and select the installation

Result:

- ETHBUS-K visualization is downloaded to MEET monitor
- KNX installation can be controlled using WIT 10''