



# CASE STUDY

## MEET-DOBISS Integration

### [Resume](#)

This document describes how to configure a MEET monitor to integrate it with a DOBISS installation.

## TABLE OF CONTENTS

INTRODUCTION .....	2
REQUIRED DEVICES .....	2
SCHEME .....	2
INSTALLATION.....	3
COMMISSIONING.....	3
APP USAGE .....	4
OTHER CONSIDERATIONS.....	5

## INTRODUCTION

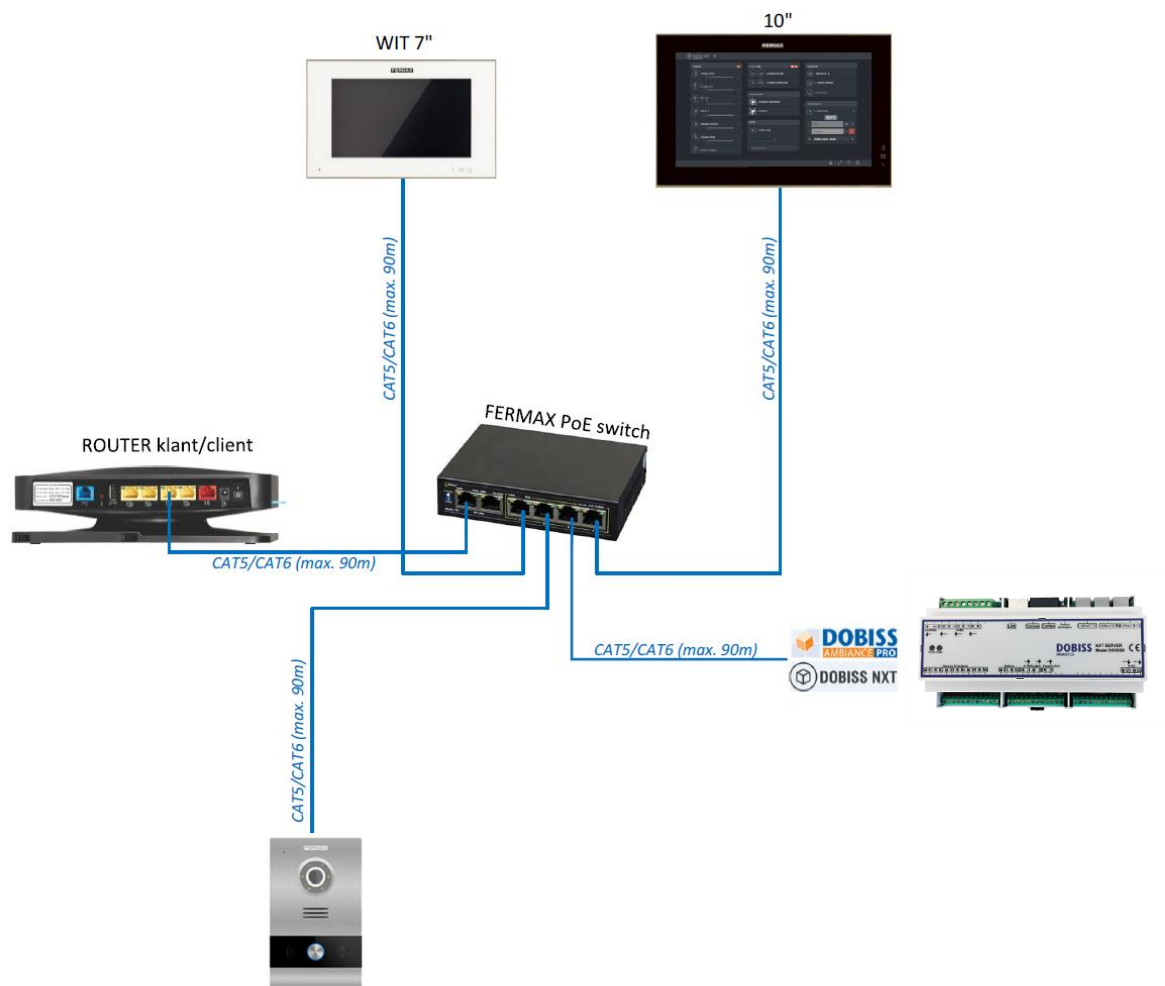
The following document explains how to integrate MEET Door Entry System and DOBISS NXT system.

Once the integration is done, control of DOBISS system via MEET monitor will be possible using an APP installed in the monitor.

## REQUIRED DEVICES

- FERMAX MIO/WIT monitor
- FERMAX MIO/WIT monitor connector
- FERMAX PoE switch or PoE injector
- NXT Server (15-24VDC power supply required)

## SCHEME



## INSTALLATION

Requistes:

- An installed MEET monitor, with an already configured IP address (i.e., 192.168.1.20; mask: 255.255.255.0; Gateway: 192.168.1.1).  
Please see [INSTALLER MANUAL, page 12](#)
- A working DOBISS NXT installation. Please see [the following link](#)
- An existing router
- Software

Chrome, Firefox or similar, updated to its latest version

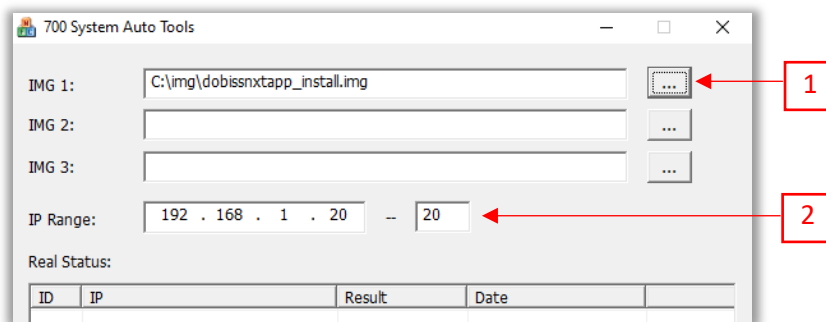
MEET monitor APP: [Link](#)

MEET System Upgrade Tool: [Link](#)

## COMMISSIONING

APP installation:

- 1) Connect your laptop to the router, via WiFi or ethernet cable. Please ensure a valid IP address has been assigned to your laptop (i.e., 192.168.1.100)
- 2) Open MEET System Upgrade Tool, select downloaded MEET monitor APP (1) and adjust MEET monitor IP address (2)



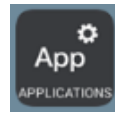
- 3) Press "Start" button to begin APP installation.

"Finished" message will be displayed once the installation has ended.

Real Status: IP:192.168.0.131 IMG[dobissnxtapp_install.img] Finished			
ID	IP	Result	Date
1	192.168.0.131	OK	2021-08-02 09:09:02

The monitor will reboot once the APP has been installed.

- 4) MEET Monitor: go to “Installer” menu and select “APPLICATIONS”



- 5) Choose “Dobiss NXT” APP, assign it an icon and save changes
- 6) Go back to Main menu

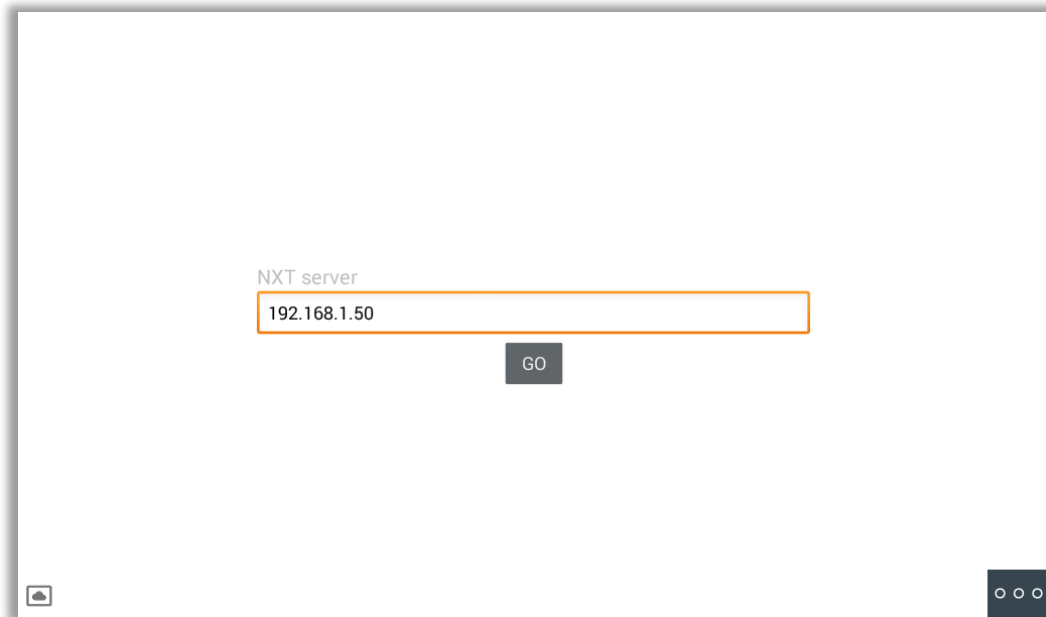
Dobiss APP will show in Main menu.



## APP USAGE

MEET monitor > Main menu > Press on Dobiss APP icon > The APP will open

First use: please configure NXT server IP address (i.e. 192.168.1.50) and press “GO” button





## OTHER CONSIDERATIONS

- WIT 10'': Dobiss APP always tries to connect to Dobiss installation using the 1<sup>st</sup> RJ45 (left, 1#), so please don't use the 2<sup>nd</sup> RJ45 (right, 2#)
- Youtube video: DOBISS NXT: Connecting Fermax MEET monitor with Dobiss NXT <https://www.youtube.com/watch?v=BVyK6K1K7Hg>
- WIT monitor FW: V03.00T