



CASE STUDY

MEET-SCHNEIDER ELECTRIC Integration

Description

This document describes how to configure a MEET monitor to integrate it with a WISER for KNX gateway

TABLE OF CONTENTS

INTRODUCTION	2
REQUIRED DEVICES	2
BASIC SCHEME	2
INSTALLATON.....	2
COMISSIONING	3
APP USAGE	5
OTHER CONSIDERATIONS.....	5

INTRODUCTION

The following document explains how to integrate MEET Door Entry System and KNX system, using a WISER for KNX gateway.

Once the integration is done, control of KNX system via MEET monitor will be possible using an APP installed in the monitor.

REQUIRED DEVICES

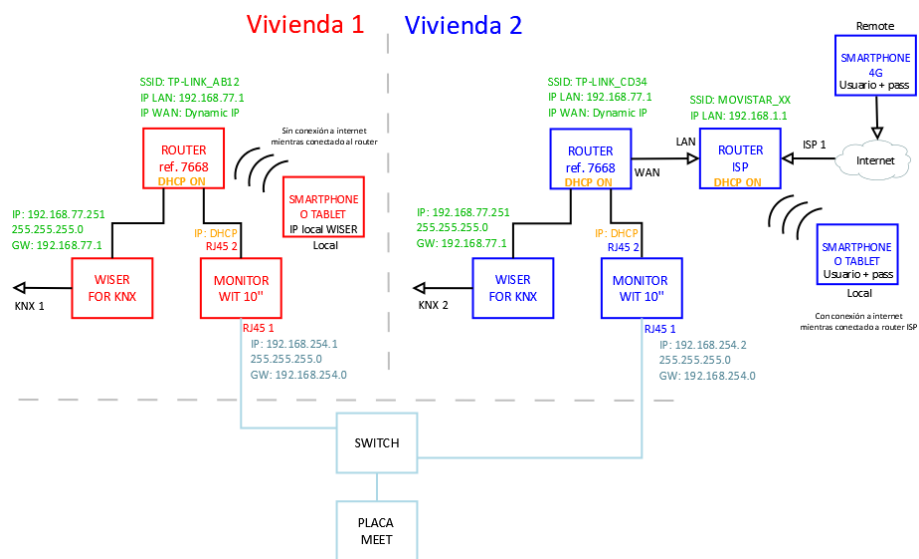
Per apartment:

- Ref. 14811 / WIT 10'' Monitor
- Ref. 9541 / MIO/WIT connector monitor
- Ref. 7668 / MEET-HA integration router
- Pasarela Schneider Electric WISER FOR KNX

BASIC SCHEME

Apartment 1 without an internet connection

Apartment 2 with an internet connection



INSTALLATON

WISER FOR KNX APP for MEET monitors: [Link](#)

COMMISSIONING

Resume

1. Office	WISER FOR KNX configuration	1. Change default IP address and gateway: 192.168.0.10 to 192.168.77.251
	Router configuration	2. Connect your laptop and WISER FOR KNX to MEET-HA integration router 3. Configure MEET-HA integration router IP address: 192.168.77.1
	WIT 10" configuration	4. Conect RJ45 1 & 2 to MEET-HA integration router 5. Install the APP WISER FOR KNX 6. Open APP -> Settings: Connection to IP address 192.168.77.251
2. Installation	Verifications	7. Power on MEET-HA integration router and WISER FOR KNX gateway 8. Connect: i. WIT 10" RJ45 1 (left) to MEET network ii. WIT 10" RJ45 2 (right) to any LAN port of MEET-HA integration router iii. Wiser for KNX gateway to any LAN port of MEET-HA integration router 9. Verifications: iv. Visualization Wiser for KNX via WIT 10" monitor
		10. ISP router installation 11. Connect MEET-HA integration router WAN por to any LAN port of ISP router
3. Apartment	Remote control (end user)	

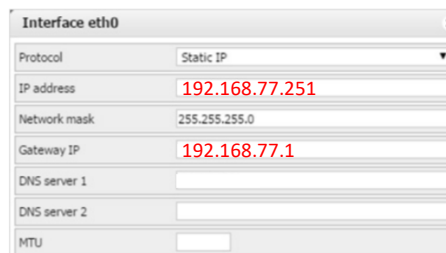
Office tasks are described below.

NOTE: Described IP address changes (Wiser for KNX & MEET-HA integration router) serves the only purpose of creating a network (192.168.77.x) which doesn't match the default IP address of the router installed by the ISP (generally 192.168.0.x or 1.x).

1. WISER FOR KNX gateway configuration

Default	IP address: 192.168.0.10 Gateway: 192.168.0.1
Required	IP address: 192.168.77.251 Gateway: 192.168.77.1

Please see WISER FOR KNX manual, page 19: [Link](#)



Save changes. The device will reboot with the new settings.

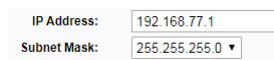
Connect WISER FOR KNX to MEET-HA router.

2. MEET-HA Integration router configuration

- i. Connect your laptop to MEET-HA router
- ii. Open the following link using any web browser <http://192.168.1.1>
User: admin; Password: admin
- iii. Network > WAN > Confirm WAN connection type is set to “Dynamic IP”



- iv. Network > LAN > Change router IP address to 192.168.77.1 and save changes

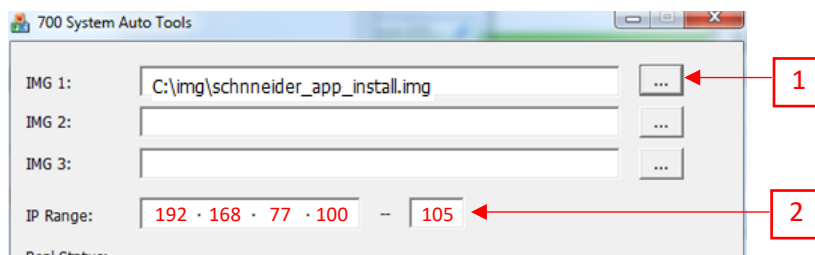


HA-MEET router will reboot.

3. WIT 10” monitor configuration

Prerequisites:

- RJ45 1 (left) connected to MEET network (or temporarily to MEET-HA router)
 - RJ45 2 (right) connected to any LAN port of MEET-HA router
- i. Download MEET System Upgrade Tool: [Link](#)
 - ii. Open MEET System Upgrade Tool, select downloaded MEET monitor APP (1) and adjust MEET monitor IP address range (2) in order to search for any MEET monitor with an IP address assigned automatically via DHCP: 192.168.77.100-105.



- iii. Press “Start” to begin APP installation.

Once the monitor is detected, the APP will be installed and the monitor will reboot.

- iv. Monitor > Go to “Installer” menu and press “APPLICATIONS” button



- v. Choose “Wiser for KNX” app, assign it an icon and saves changes.

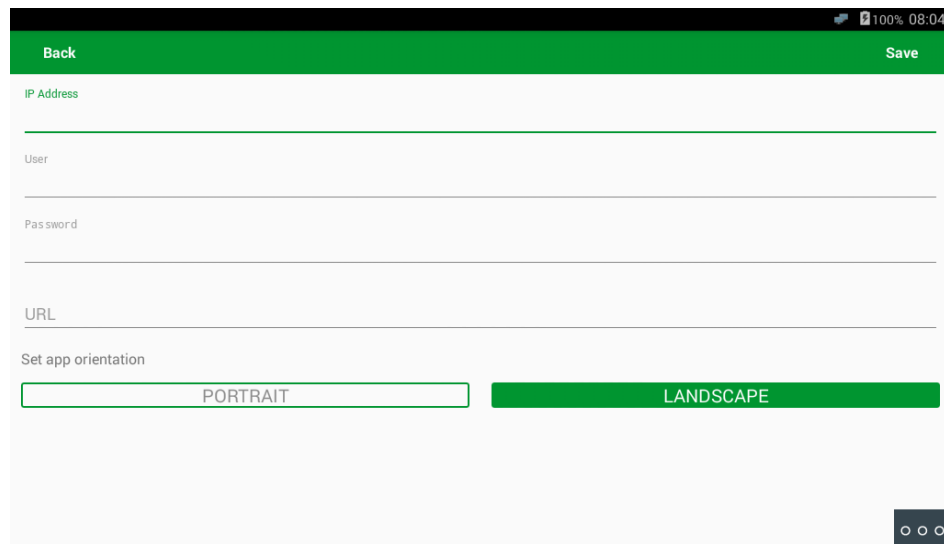
Wiser for KNX APP will show in Main menu.



APP USAGE

Open the APP and change APP settings:

- IP address: 192.168.77.251 (Wiser for KNX device)
- User and Password
- Orientation: Landscape



Press “Save”.

OTHER CONSIDERATIONS

Compatible visualizations:

- PC/Tablet
- Smartphone
- Touch 2 (FW 2.5.1, without upgrading to Touch 3)

Not compatible visualization:

- Touch 3

APP W4K Inside v1.0.10; HW version V3.1

WIT monitor FW: V03.00T