



CASE STUDY

MEET-HA gateway Integration

Description

This document describes how to integrate MEET monitor with HA webservers from different manufacturers using the APP "INTEGRA"

TABLE OF CONTENTS

INTRODUCTION	2
REQUIRED DEVICES	2
BASIC SCHEME.....	2
INSTALLATON	2
COMISSIONING.....	3
APP USAGE	5
OTHER CONSIDERATIONS.....	5

INTRODUCTION

The following document explains how to integrate MEET Door Entry System and HA system using the APP "INTEGRA", a generic solution for connecting to devices based on web browser (HTML + CSS + Javascript).

Compatible devices:

1. Schneider Electric – Wiser for KNX (Touch 3 not compatible)
2. Embedded Systems – Logic Machine (Mosaic 3 not compatible)
3. ABB/Bab-tec – eibPort Control L
4. Divus – D+ Optima

Described steps apply to Building projects. Its main objective is to ensure the initial operation of different devices and systems, without requiring an already existing internet connection -and an installed router-, as well as avoiding additional visits from our side to finish the commissioning.

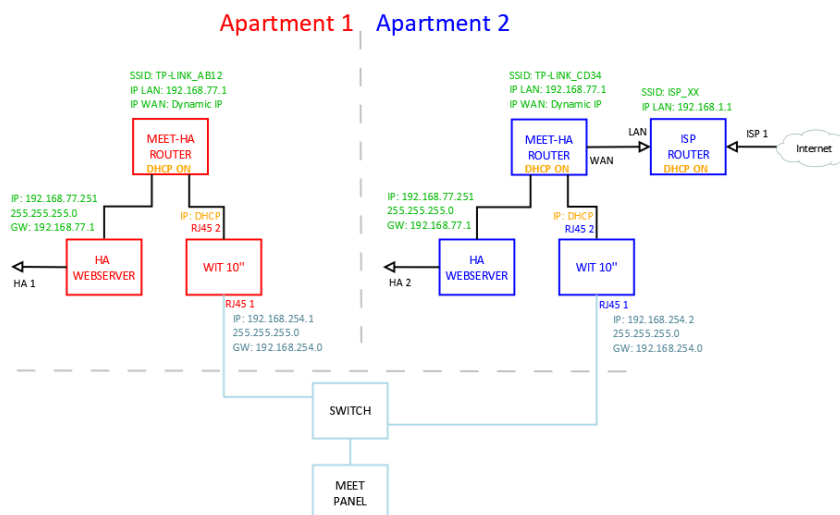
REQUIRED DEVICES

Per apartment:

- Ref. 14811 / WIT 10'' Monitor
- Ref. 9541 / MIO/WIT connector monitor
- Ref. 7668 / MEET-HA integration router
- Third party webserver

BASIC SCHEME

Apartment 1 without an internet connection. Apartment 2 with an internet connection



INSTALLATION

INTEGRA APP for MEET monitors: [Link](#)

COMISSIONING

Resume

1. Office	HA webserver configuration	1. Change default IP address and gateway: 192.168.0.10 to 192.168.77.251
	Router configuration	2. Connect your laptop and the HA webserver to MEET-HA integration router 3. Configure MEET-HA integration router IP address: 192.168.77.1
	WIT 10" configuration	4. Conect RJ45 1 & 2 to MEET-HA integration router 5. Install INTEGRA APP 6. Open the APP -> Settings: Connection to IP address 192.168.77.251
2. Installation	Verifications	7. Power on MEET-HA integration router and HA gateway 8. Connect: i. WIT 10" RJ45 1 (left) to MEET network ii. WIT 10" RJ45 2 (right) to any LAN port of MEET-HA integration router iii. HA webserver to any LAN port of MEET-HA integration router 9. Verifications: iv. Visualization of HA webserver via WIT 10" monitor
		10. ISP router installation 11. Connect MEET-HA integration router WAN por to any LAN port of ISP router
3. Apartment	Remote control (end user)	

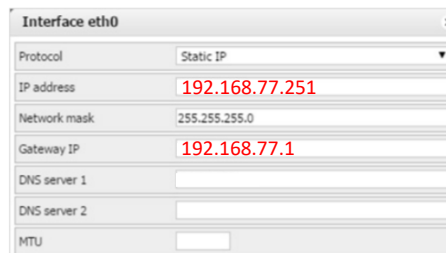
Office tasks are described below.

NOTE: Described IP address changes (HA webserver & MEET-HA integration router) serves the only purpose of creating a network (192.168.77.x) which doesn't match the default IP address of the router installed by the ISP (generally 192.168.0.x or 1.x).

1. Configuration of HA webserver

Required	IP address: 192.168.77.251 Gateway: 192.168.77.1
-----------------	---

Example. WISER FOR KNX manual, page 19: [Link](#)



Save changes. The device will reboot with the new settings.

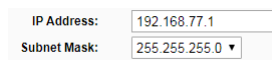
Connect the HA webserver to MEET-HA router.

2. MEET-HA router configuration

- i. Connect your laptop to HA-MEET router
- ii. Open the following link using any web browser <http://192.168.1.1>
User: admin; Password: admin
- iii. Network > WAN > Confirm WAN connection type is set to “Dynamic IP”



- iv. Network > LAN > Change the IP address of the router to 192.168.77.1 and save changes

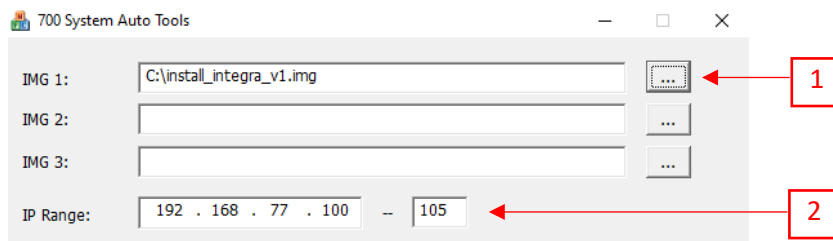


HA-MEET router will reboot.

3. WIT 10” monitor configuration

Prerequisites:

- RJ45 1 (left) connected to MEET network (or temporarily to MEET-HA router)
 - RJ45 2 (right) connected to any LAN port of MEET-HA router
- i. Download MEET System Upgrade Tool: [Link](#)
 - ii. Open MEET System Upgrade Tool, select INTEGRA APP (1) and adjust MEET monitor the IP address range (2) to search for any MEET monitor with an IP address assigned automatically via DHCP: 192.168.77.100-105.



- iii. Press “Start” to begin APP installation.

Once the monitor is detected, the APP will be installed, and the monitor will reboot.

- iv. Monitor > Go to “Installer” menu and press “APPLICATIONS” button



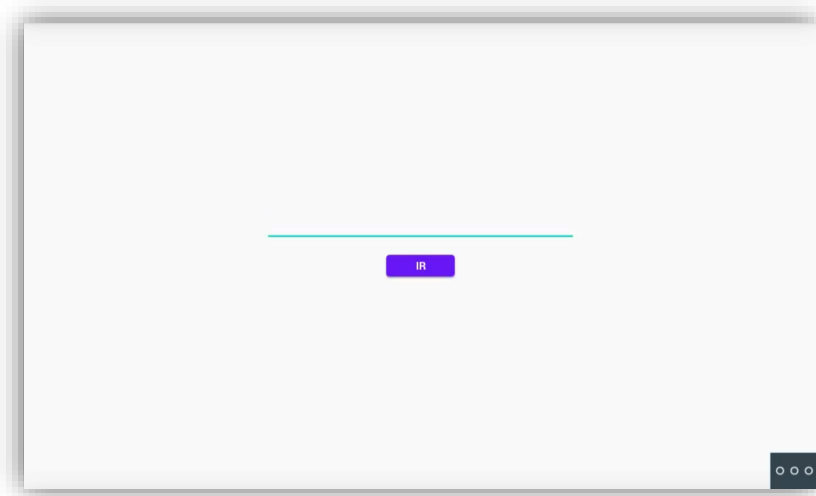
- v. Choose "INTEGRA" app, assign it an icon and saves changes.

INTEGRA APP will show in Main menu.



APP USAGE


Open the APP and write the URL of the HA device:



URL:

Device	URL
Wiser for KNX	http://usr:passwd@192.168.77.251/scada-vis
Logic Machine	http://usr:passwd@192.168.77.251/scada-vis/touch
eibPort	http://192.168.77.251
D+ Optima	

Press "GO". The visualization will be shown.

In case of needing to modify the URL, please press  and then 

OTHER CONSIDERATIONS

FW monitor WIT: V03.00T

APP Integra v1.0