



# CASE STUDY

## MEET-THINKNX Integration

### Description

The following document tries to summarize steps to follow to integrate MEET IP Door Entry System & THINKNX Micro server

## INDEX

INTRODUCTION .....	2
MATERIAL.....	2
BASIC SCHEME .....	2
INSTALLATION.....	<b>Error! Bookmark not defined.</b>
CONFIGURATION .....	3
1. Integration of FERMAX entrance panels in THINKNX UP application .....	3
TESTS .....	6
OTHER CONSIDERATIONS.....	6

## INTRODUCTION

The purpose of this document is to set out the steps to be followed to:

1. Integrate the outdoor panel call in the ThinkKNX UP APP, via SIP server available on the ThinkKNX Micro device.
2. Control of a KNX installation from MEET monitors, via the visualisation of the ThinkKNX Micro itself.

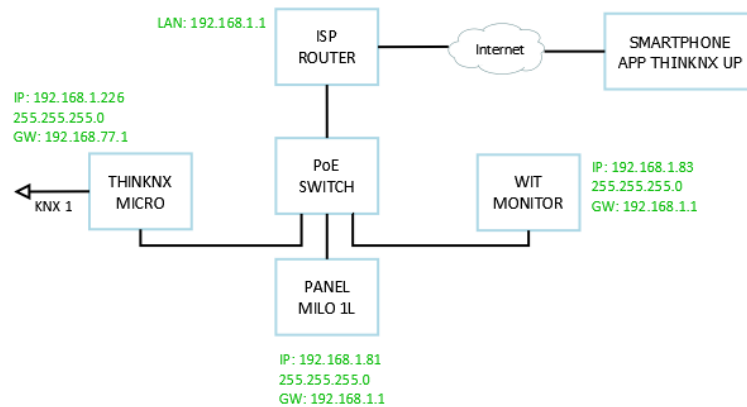
## MATERIAL

- Ref. 14811-14813 / Monitor WIT 10"
- Ref. 9541 / MIO/WIT Monitor Connector
- Ref. 9533 / MILO Panel 1L
- Ref. 1586 / Switch 4 PoE ports
- MICRO THINKKNX Gateway

Optional material in case, in addition to opening the main door (e.g.: pedestrian access door) controlled from the panel itself, it is desired to manage a secondary door (e.g.: garage door):

- Ref. 1490 / External door opener MEET

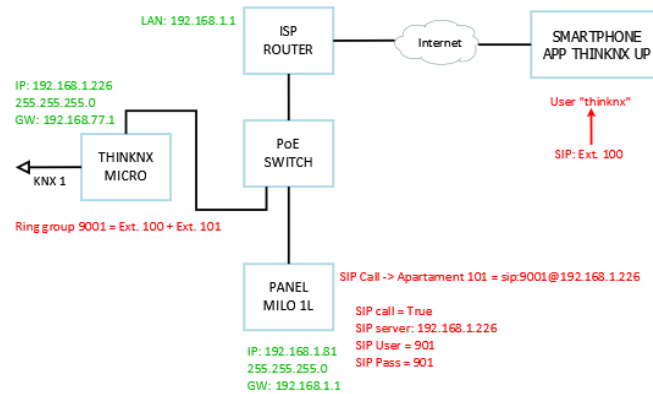
## BASIC SCHEME



# CONFIGURATION

## 1. Integration of FERMAX entrance panels in THINKNX UP application

### Summary

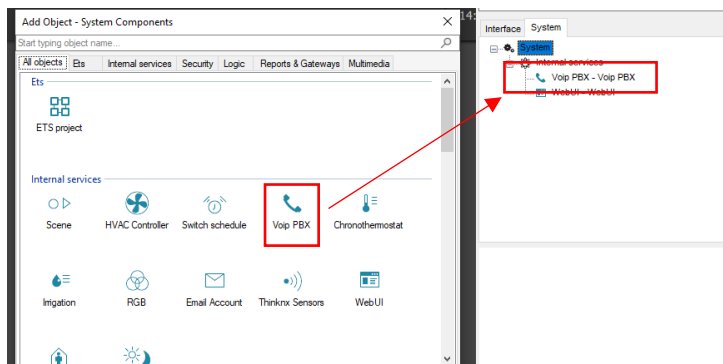


- Entrance panel registered on SIP server ThinkKNX Micro as **extension 901**
- SIP server ThinkKNX Micro contains **Ring group 9001** with a set of extensions to call (100, 101...), assigned to certain users ("thinknx1", "thinknx2" ...).
- When calling from the door station, extension 901 will call Ring group 9001, which contains the different extensions associated to the users. Those who are registered on the SIP server at that time will receive the call.

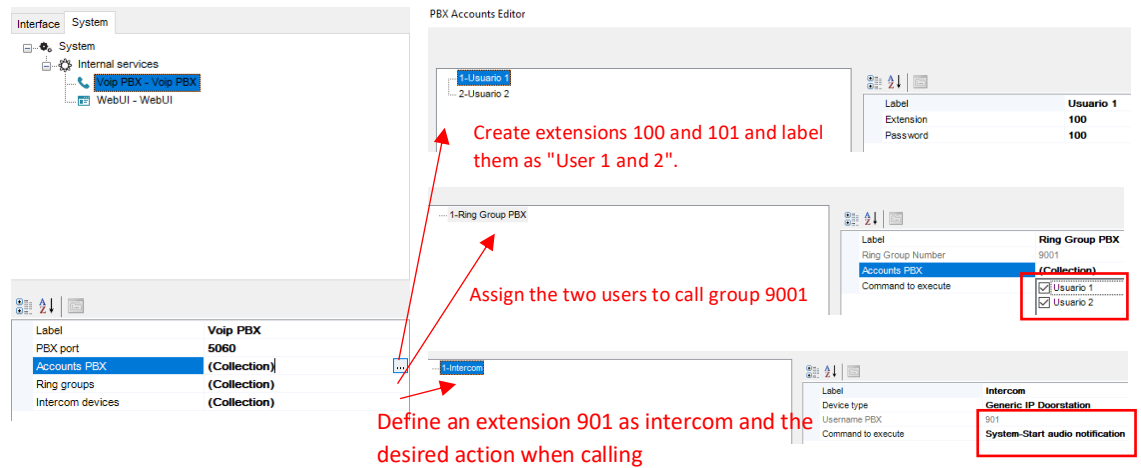
### Audio integration

#### ThinkKNX Micro SIP Server

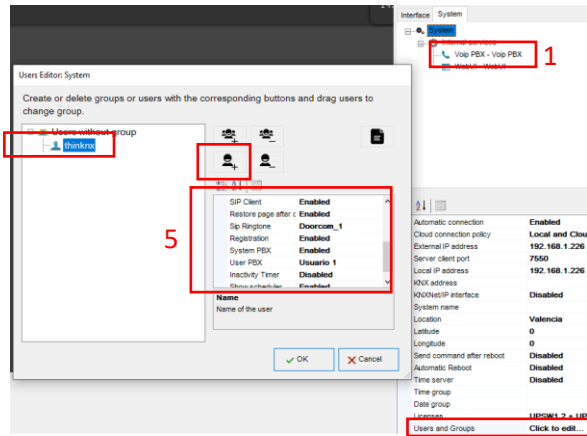
1. Thinknx Configurator > System > System > Right click > Add object > Voip PBX



2. Select "Voip PBX" and set up users, call groups and intercoms



3. Associate extensions and user. Example user "thinknx" (password thinknxPass1) associated to extension 100:



Panel Milo 1L

1. Web server > General > Configure MEET P2P call (Block = 1; Apart. = 101)

DISPOSITIVO	CONF
GENERAL	
CONFIG.RED	
ACC	
SIP	
SIP TRUNK	
	TIPO: PLACA INDIV.
	BLOQUE: 1
	APART.: 101
	Nº DE EQUIPO: 1
	TAG DE DISPOSITIVO: MILO 1L

2. SIP > Register the panel on the ThinKNX Micro SIP server as extension 901.

DISPOSITIVO	
GENERAL	
CONFIG.RED	
ACC	
SIP	
SIP TRUNK	
SIP CALL	
AVANZADO	
CÓDIGO PIN	
RESTAURAR	
	ACTIVAR SIP: <input checked="" type="checkbox"/> VER SIP STATUS
	SERVIDOR SIP: sip:192.168.1.226
	DOMINIO: 192.168.1.226
	IP STUN: 5060
	PUERTO STUN: 5060
	H.264: 102
	USUARIO SIP: 901
	PASS SIP: ***
	CONVERSACION: 120s
	TONO DE LLAMADA: 30s

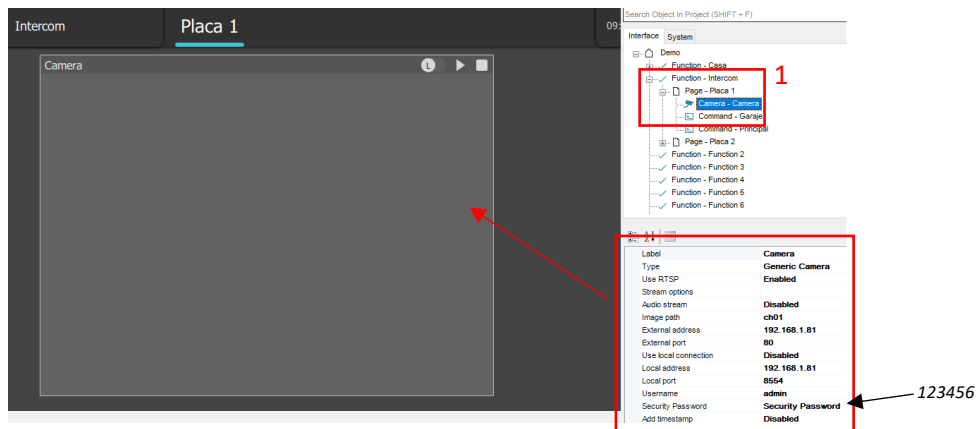
### 3. SIP Call > Apartment 101 = Call group call 9001 from SIP ThinKNX server

SIP CALL	APARTAMENTO	NÚMERO
AVANZADO	101	sip:9001@192.168.1.226

### Video integration

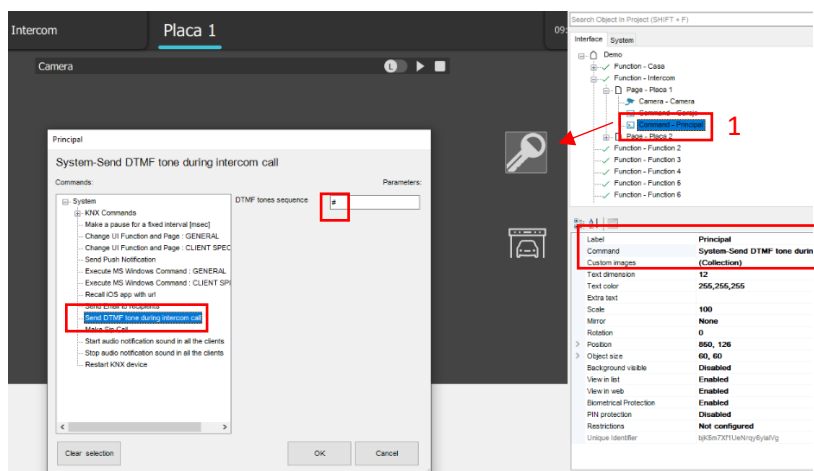
#### ThinKNX Micro SIP Server

Interface > Create a new function "Intercom", define a new page "Page 1" and add a new object "Camera" to it. Set the parameters



### Door opening control

ThinKNX Configurator > Interface > "Intercom" function > Add object > "Generic command" > Command = Send DTMF tone during conversation > DTMF Tone = "#"



In case there is a second door (e.g., garage), add a device ref. 1490 / MEET external relay to be connected to the MILO 1L panel and include a new button via ThinKNX Configurator that sends the DTMF tone "0".

## TESTS

1. Call from outdoor panel to WIT monitor and ThinkKNX UP smartphone APP (user "thinknx")

Steps		Result	OK?
1	Open APP ThinkKNX UP using an smartphone for registratering in the SIP server and leave it in background*.	Thinknx Voip icon is shown	
	<a href="#">Push button panel Milo 1L</a>	Parallel call: <ul style="list-style-type: none"><li>• MEET P2P: WIT Monitor apt. 101</li><li>• SIP: ThinkKNX UP smartphone APP</li></ul>	
	Answer from MEET <b>monitor</b> . Open door	Call to smartphone ends when answering	
	<a href="#">Push button panel Milo 1L</a>	Parallel call: <ul style="list-style-type: none"><li>• MEET P2P: WIT Monitor apt. 101</li><li>• SIP: ThinkKNX UP smartphone APP</li></ul>	
5	Answer from <b>smartphone</b> . Open door	Call to MEET monitor ends when responding	
	Close APP ThinkKNX UP on smartphone	We are no longer registered on the ThinkKNX SIP server.	
	<a href="#">Push button panel Milo 1L</a>	Single call to MEET P2P: WIT monitor	

*\*Alternative for call forwarding without requiring to keep APP ThinkKNX UP in the background:  
MEET ME APP*

2. Home automation control:

- A) Via Smartphone
- B) Via WIT monitor

## OTHER CONSIDERATIONS

FW THINKNX MICRO Fw. Version: 1.1.10.18

FW monitor WIT: V03.00T