



CASE STUDY

MEET-Horizone Mini EELECTRON Integration

Description

This document tries to resume the steps to be done to get an integration between a MEET monitor with a Horizone Mini KNX gateway from EELECTRON

INDEX

INTRODUCTION 2

MATERIAL REQUIRED 2

BASIC SCHEME..... 2

INSTALLATION 3

CONFIGURATION 3

OPERATION 5

OTHER CONSIDERATIONS..... 5

INTRODUCTION

The objective of this document is to explain the steps to follow to achieve the control of a KNX installation from MEET monitors, using the Horizonte Mini webserver. The web server of this controller allows the configuration by the installer of the KNX system and also the daily operation of the resident to interact with the home automation devices.

The steps described apply to building projects and their main objective is to ensure the operation of the different equipment and systems without requiring the initial existence of an internet connection in the home, as well as making it possible for the end user to carry out the start-up, without requiring an additional trip to the home by the installer. In the case of a single-family installation, the configuration is similar, eliminating the Meet-Home Automation Integration router.

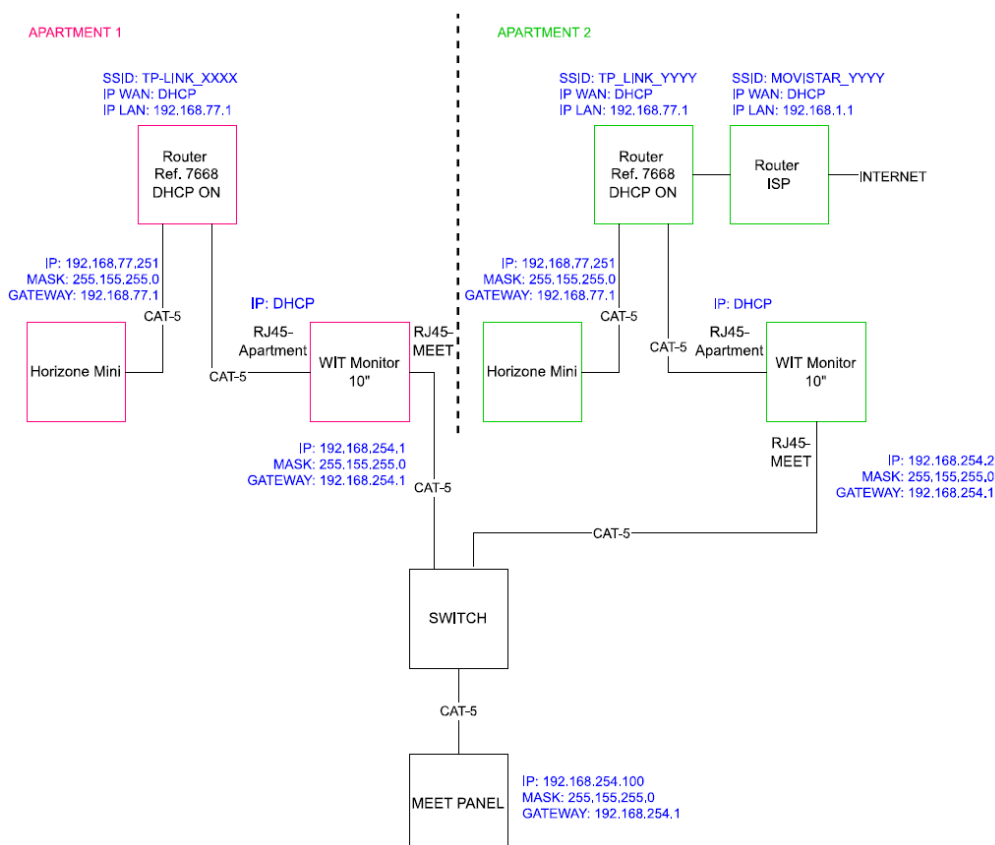
MATERIAL REQUIRED

Per dwelling:

- Ref. 14831/ WIT 10" Monitor
- Ref. 9541 / MIO/WIT Monitor Connector
- Ref. 7668 / MEET-Home automation Integration Router
- Horizonte Mini Gateway IN00M02WEB

BASIC SCHEME

Dwelling 1 without internet connection. Dwelling 2 with internet connection.



INSTALLATION

Make the connections according to the basic diagram, depending on the availability of the Internet access router in the home. The MEET monitor is connected to the IP video door entry installation via the RJ-45 labelled as MEET (PoE), from which it is powered, and to the home's router via the RJ45 labelled as APARTMENT, keeping the home's local network isolated from the rest of the homes and the video door entry installation.

The Horizone Mini gateway connects to the home's MEET router and the home's MEET router to the ISP's router if available. It also connects to KNX devices via the WAGO connector and requires a 12 to 24 Vdc power supply.

CONFIGURATION

Summary

1. Office	HORIZONE MINI configuration	1. Connect HORIZONE MINI to PC with a crossover Ethernet cable. 2. Change default HORIZONE MINI IP to 192.168.77.251
	Configuration Router	3. Connect PC to MEET-Home Automation Integration Router 4. Configure MEET-Home Automation Integration Router with IP 192.168.77.1
	Configuration WIT 10" WIT 10"	5. Connect <u>the two</u> RJ45 WIT 10" to the MEET-Home Automation Integration Router . 6. Install APP INTEGRA on WIT 10" monitor 7. Open APP -> Configure local connection to IP 192.168.77.251
2. Site	Verifications	8. Power MEET-Home Automation Integration Router and Horizone Mini device 9. Verify: i. Horizone Mini visualisation via WIT 10" monitor ii. Local control via smartphone connected to WiFi network of MEET-Home Automation Integration Router
3. Housing	Remote control (end user) If applicable	10. Install ISP router 11. Connect WAN port of MEET-Home Automation Integration Router to any LAN port of the ISP router

The work to be carried out in the Office is detailed below.

NOTE: The only purpose of changing the IP of the Horizone Mini gateway and the MEET-Home AUtomatic Integration Router (192.168.1.1) is to create a network (192.168.77.x) that cannot match the default IP of the router installed by the ISP (usually 192.168.0.x or 1.x), ensuring correct operation when the user connects the WAN port of the integration router to one of the LAN ports of the ISP's router.

1. Configuration of the HORIZONE MINI KNX Gateway

Required	IP address: 192.168.77.251 Gateway: 192.168.77.1
-----------------	---

See manual IN00M02WEBFI0001010101_quick_start_guide on the Eelectron website.

Save changes. The device will restart with the new IP address set.

2. Configuration of MEET-Home Automation Integration Router

- i. Connect the PC to the router

- ii. Open the web browser and access the router's configuration menu <http://192.168.1.1>.
Username: admin; Password: admin

- iii. Network > WAN > Confirm that the WAN connection type is set to "Dynamic IP".

WAN Connection Type:	Dynamic IP
----------------------	------------

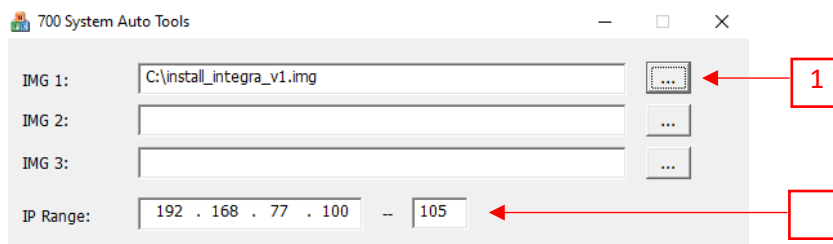
- iv. Network > LAN > Change the IP address of the router to 192.168.77.1 and save the changes.

IP Address:	192.168.77.1
Subnet Mask:	255.255.255.0

The Integration Router will reboot.

3. WIT 10" monitor configuration.

- i. Download the INTEGRA APP image for MEET monitors: integra_a10_v1.0.rar
- ii. Open the MEET System Upgrade Tool software, select the INTEGRA APP (1) and set IP Range to run a search for the MEET monitor in the initial range of IP addresses assigned by DHCP by the router: 192.168.77.100-105 (2).



- iii. Press "Start" to start the search for MEET monitors in the selected range.

Once detected, the APP will be installed and the monitor will restart after the process is complete.

- iv. Monitor > Go to the installer menu (password 6666) and open the APPS menu.



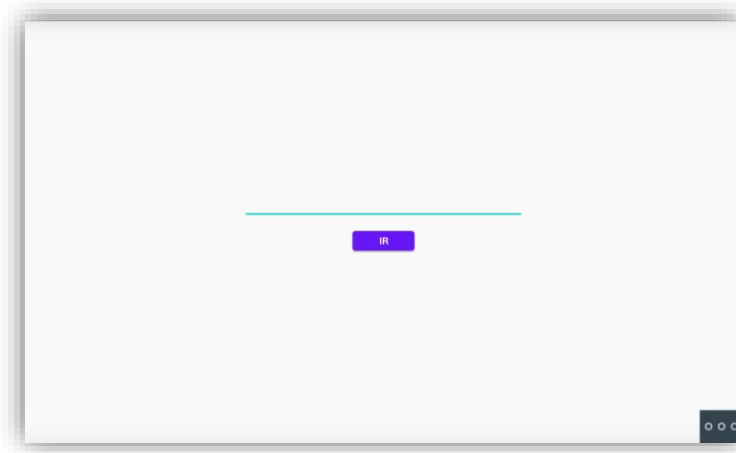
- v. Select the "INTEGRA" app and assign an icon to it. Save the settings.

The INTEGRA application will be displayed in the initial menu of the monitor.



OPERATION



Open the APP and set the IP address of the device you want to connect to.



Device	URL type
HORIZONE MINI	http://192.168.77.251/

Press "GO". From that moment on, the display will be shown every time the APP is accessed.



If you want to modify the URL, you can do so by clicking on  and then on .

OTHER CONSIDERATIONS

The Eelectron Horizone apk does not run correctly on the WIT monitor as it appears rotated and requires localisation services. That's why we use our INTEGRA web browser to access gateway.

The Settings icon is disabled so that the resident cannot make unauthorized changes. The installer must connect to the web server through a browser in order to access this option.

Version APP Integra: A10_v1.0

FW monitor WIT: V03.10 or later.