

MEET



FERMAX

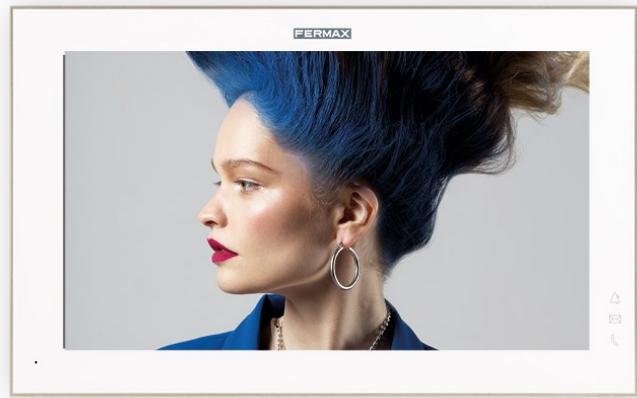


SUCCESS CASE

MEET IP AND SHELLY HOME AUTOMATION INTEGRATION

MEET

MEET



Shelly®



MEET INTERCOM INTEGRATED WITH
SHELLY WIRELESS HOME AUTOMATION



FERMAX

VIDEO INTERCOM INTEGRATION WITH HOME AUTOMATION

It is possible to reduce costs in home automation projects by integrating the video intercom with the home automation system. **FERMAX and Shelly** offer a wide portfolio of devices to choose from, what makes an ideal choice in any project technical or budget requirements.

The integration is based in FERMAX indoor intercoms that can control, using its touch screen, the home automation by just installing an app. This app will display and connect with the visualization offered by the Shelly Cloud.

This can also be combined with **MEET ME** Call Divert app, so the calls can be answered from the smartphone.

FUNCTIONALITIES



- CALL DIVERT ON APP UP TO 8 SIMULTANEOUSLY DEVICES PER APARTMENT (NO ADDITIONAL COSTS)**
- HOME AUTOMATION CONTROL AND VIDEO INTERCOM FROM THE SAME TOUCH SCREEN PANEL**
- RTSP VIDEO STREAM CAN BE SENT IN PARALLEL TO A CCTV RECORDER**
- REMOTE HOME AUTOMATION CONTROL BY CLOUD AND APP**
- SECONDARY DOOR OPENING AND IP CAMERAS VISUALIZATION**

BENEFITS



- ◆ Reducing costs thanks to the use of an intercom as a home automation panel.
- ◆ Integration and configuration time is reduced thanks to IP technology and cloud.

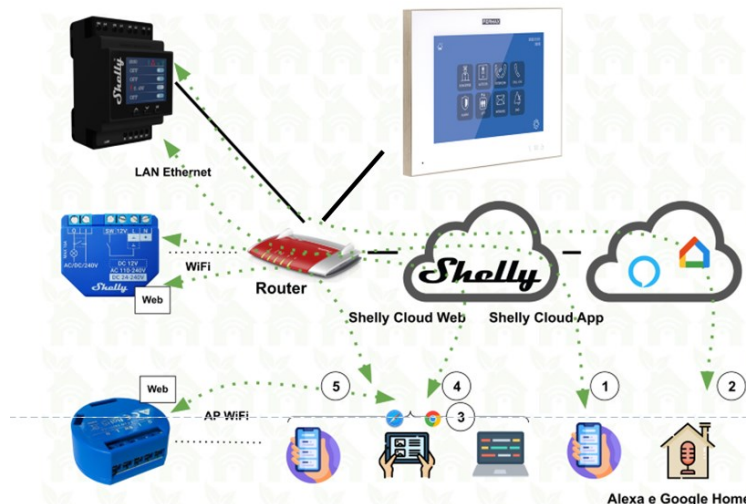


INSTALLATION

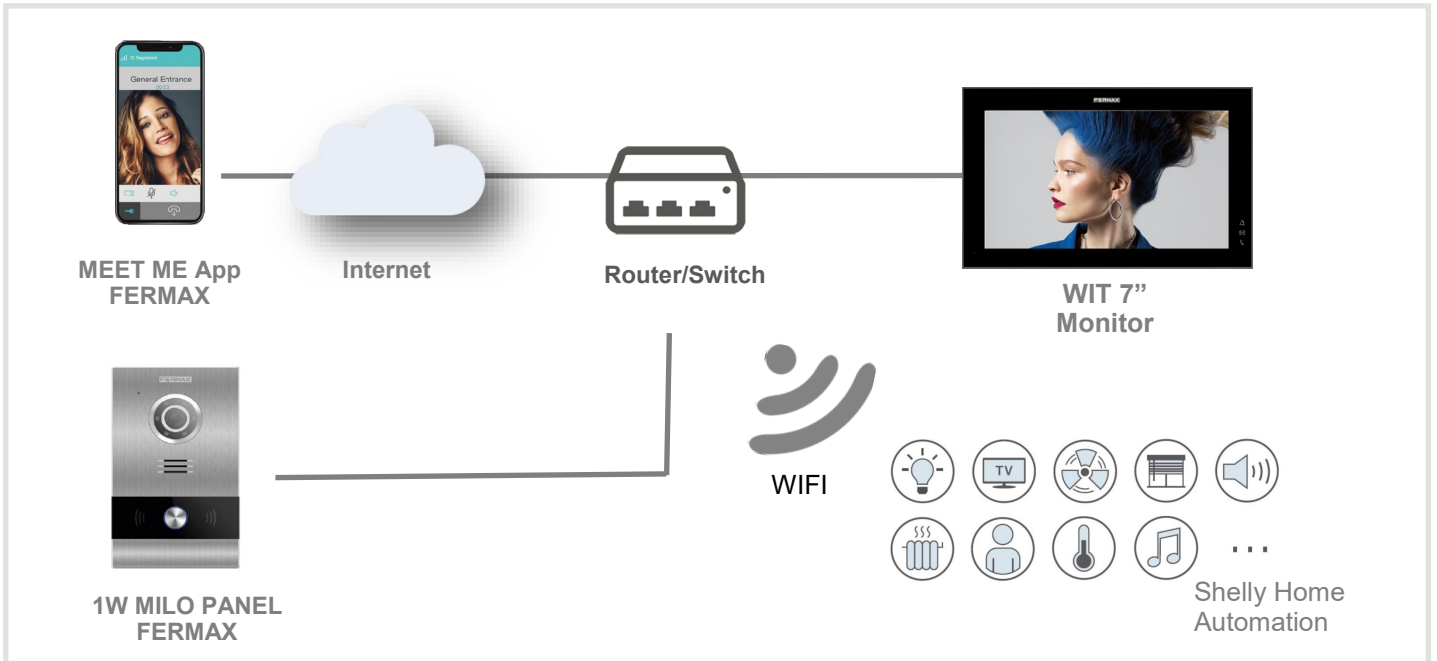
Shelly devices will be connected in the local wifi or network and will communicate with the cloud server so that the user configuration and visualization can be used through the mobile phone.

In the same way, the FERMAX indoor monitor will be also connected to the apartment local network using one of the RJ-45 connectors provided. The monitor will also be connected with the secondary RJ-45 to the building common network, where the outdoor panel is connected.

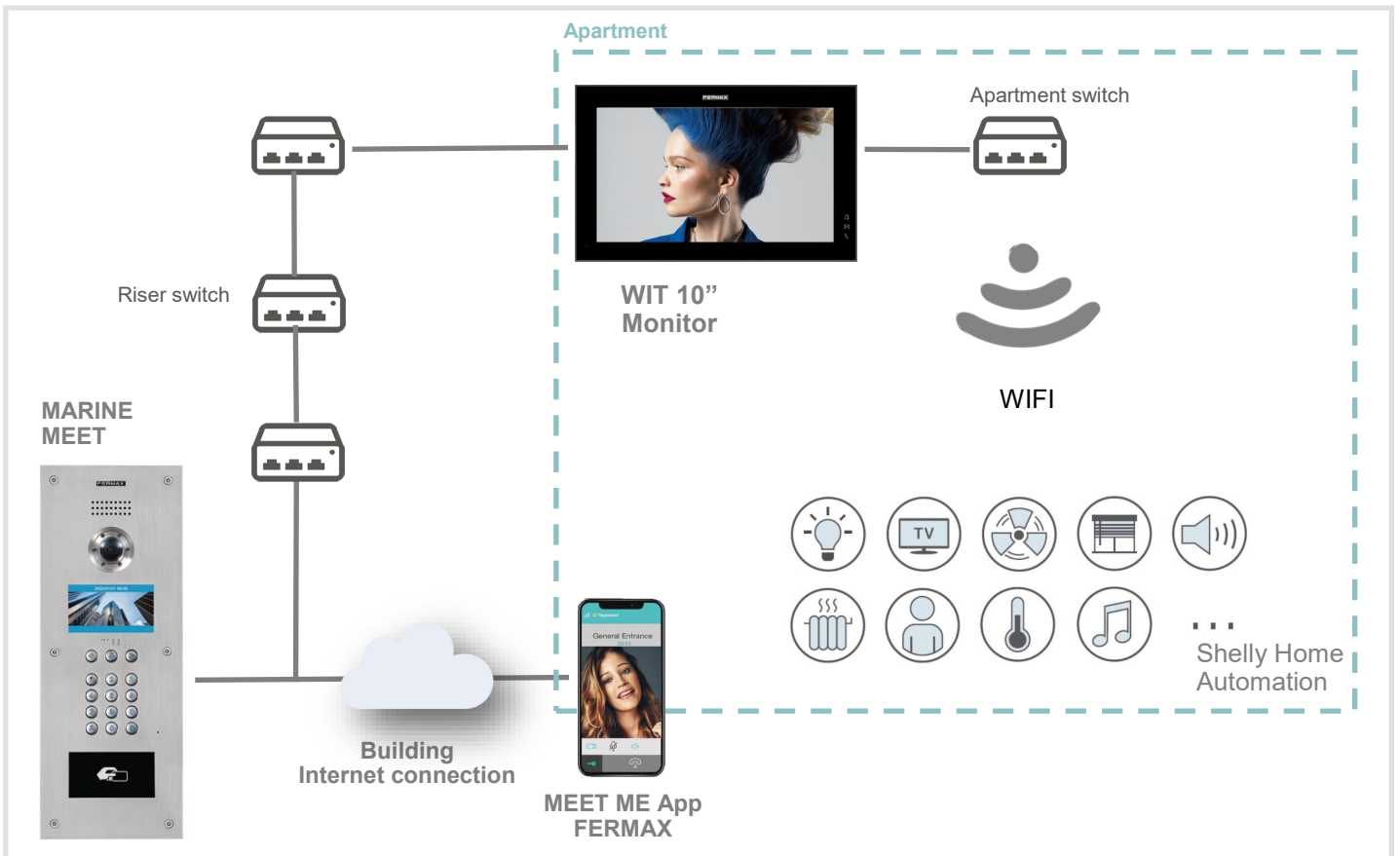
From **WIT** indoor monitors it is possible to control the home automation by simply installing FERMAX INTEGRA app in the monitor. The app will connect with the user account at **SHELLY CLOUD** and hence provide the same home automation control as in the smartphone.



SOLUTION WITH WIT 7" TOUCH SCREEN (Single Villa Example)



SOLUTION WITH FERMAX WIT MONITORS (Multi apartment building)



The WIT monitor will provide the graphic user interface to control the Shelly Home Automation system. This will require the indoor monitor to connect to Shelly Cloud user account as it is done in the smartphone app.

REFERENCE NUMBERS



WIT 7" Y 10" INDOOR MONITORS



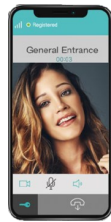
ref.9533

MILO 1 PUSHBUTTON
OUTDOOR PANEL

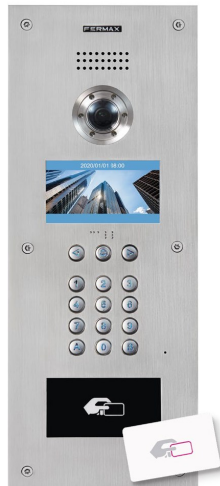


ref.953303

MEET ME
CALL DIVERT



KIN PANEL



MARINE PANEL



PANELS

- 9531 **MILO DIGITAL VIDEO PANEL MEET**
- 9532 **MILO TOUCH VIDEO PANEL MEET**
Panel: 155x380x48mm. 1,2 Mpx
- 9536 **DIRECTORY MILO PANEL MEET**
Flush box 143x357x58mm. Flush box not included.
- 9542 **MILO PANEL FLUSH BOX- L MEET**
Flush box 143x357x58mm
- 9517 **MILO DIGITAL PANEL SURFACE BOX MEET**
Flush box: 160x387x66-108mm
- 9533 **1/W MILO VIDEO PANEL MEET**
- 9534 **1/W MILO VIDEO PANEL WITH PROX MEET**
- 953303 **1/W MILO VIDEO BLACK PANEL MEET**
Panel: 118x183x49mm. 1 Mpx.
- 9535 **MEET PROXIMITY READER**
Panel: 118x183x49mm.
- 9543 **MEET PANEL FLUSH - S**
Flush box: 105x172,5x63mm
- 1455 **MARINE DIGITAL VIDEO PANEL MEET**
155x 410x 49mm
- 1459 **MARINE PANEL FLUSH BOX MEET**
141x394x60mm
- 1445 **KIN TOUCH PANEL MEET**
Panel: 185x405x50 mm
- 1449 **KIN PANEL FLUSH BOX MEET**
Panel: 170x382x58 mm

FERMAX INTERCOM INDOOR UNITS

* Confirm WIT Android 10 availability

- 14721 **7" WIT MONITOR PoE WHITE**
- 14723 **7" WIT MONITOR PoE BLACK**
1 connector RJ-45. Dimensions: 212x132,5x20mm
- 14831 **10" WIT MONITOR HOME AUTOMATION PoE WHITE**
- 14833 **10" WIT MONITOR HOME AUTOMATION PoE BLACK**
2 connectors R-J45. Dimensions: 270x168x20mm
- 1489 **10" WIT MONITOR FLUSH BOX**
Dimensions: 255x155x50mm
- 9541 **MIO/WIT MONITOR CONNECTOR**
Mounting support for the MIO/WIT monitor on the wall.
Includes monitor connection cables.
- 1496 **MEET ME LICENSE (CALL DIVERT)**
up to 8 simultaneous users with the same license

Shelly

<https://www.shelly.cloud>