



CASE STUDY

MEET-GIRA X1 Integration

Description

This document summarises the steps to be followed to integrate a MEET monitor with the Gira X1 gateway.

INDEX

INTRODUCTION	2
MATERIAL REQUIRED	2
BASIC SCHEME.....	2
INSTALLATION	3
CONFIGURATION	3
OPERATION	7
OTHER CONSIDERATIONS.....	7

INTRODUCTION

The aim of this document is to explain the steps to follow in order to manage a KNX home automation installation from MEET monitors, using the GIRA X1 gateway. In this way, the same screen that is used to receive the video door entry call is used for home automation management.

MATERIAL REQUIRED

Any Fermax MEET outdoor panel can be used for this integration. In the case of a single-family dwelling, the one-way MILO panel (single pushbutton) will be used. In the case of a building or housing estate, the MILO panel can be used or, if an electronic directory is required, the KIN or MARINE panel.

The outdoor panel may require a power supply or PoE splitter if it does not support PoE, as well as the electric strike.

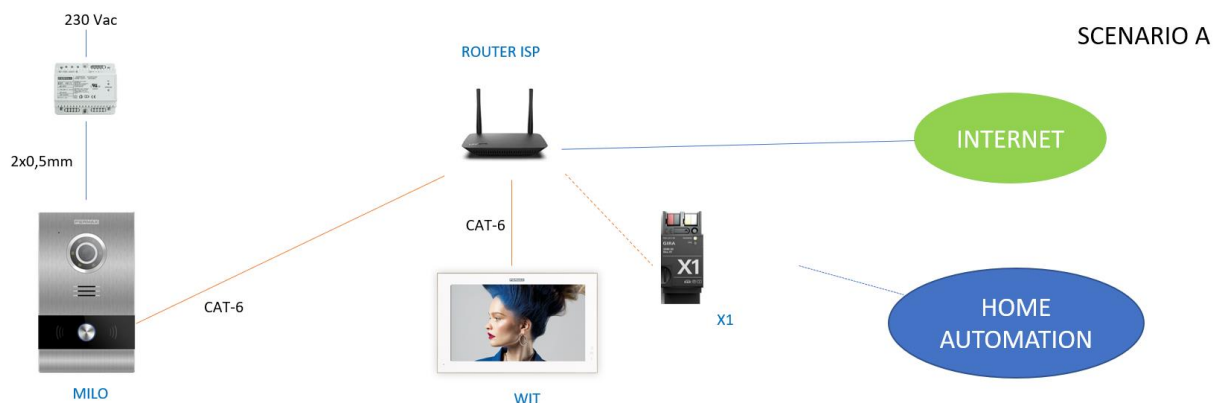
Inside each unit:

- Ref. 14721 or 14831 / Monitor WIT 7" or 10" (Android 10)
- Ref. 9541 / MIO/WIT Monitor Connector
- Ref. 7668 / MEET-HA Integration Router (optional)
- GIRA X1 gateway

BASIC SCHEME

A) Single-family installation.

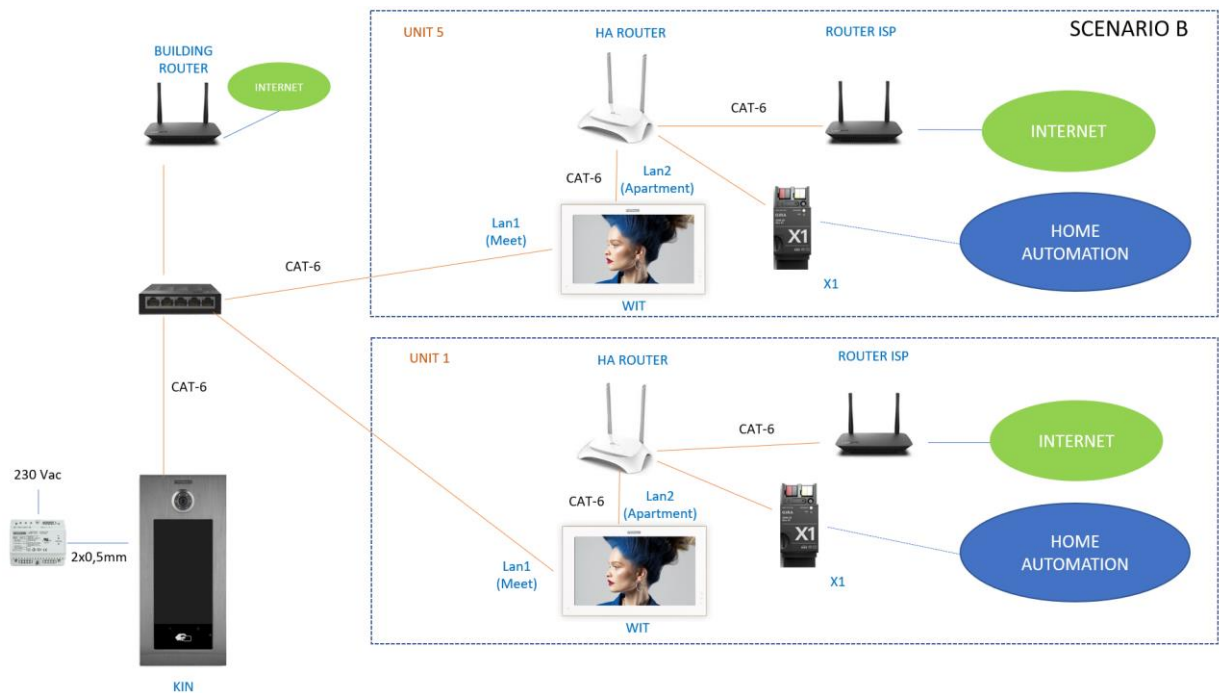
The usual MEET system installation scheme is used, with the only additional requirement of connecting the panel to the local network of the home installation, where the GIRA X1 gateway is installed.



Several Meet monitors (ref. 14721 or ref.14831) can be installed, one in each room, up to a maximum of 8, with the possibility of receiving calls from the outdoor panel and also managing the home automation in all of them. The RJ-45 Meet connection with static IP is used.

B) Building installation

The installation is similar to the single-family installation, but adding as many monitors as there are dwellings. In this case the monitor must be reference 14831 in order to be able to isolate the lan installation of the building from that of the dwelling, so that the networks of each dwelling are kept secure.



In this case, it is recommended to install an integration router ref. 7668 in each unit in order to be able to assign a dynamic IP which is required for the connection of the unit to the WIT monitor, as the ISP router is not available in new buildings, so that everything can be tested and prepared for connection to the Gira X1 Gateway.

A communal internet connection is required if you want to be able to forward calls to the MeetMe App in parallel to the home monitors.

INSTALLATION

No special requirements, following the installation protocol of a Meet system outdoor panel and the corresponding part of the Gira X1 Gateway.

In a single-family installation, connect the entrance panel, monitor and Gira X1 gateway to the ISP router. In a building installation, a network will be created for the building, with its separate ISP router if call forwarding to the MeetMe App is desired. Lan1 of the monitors will be connected to the building network. Lan2 is connected to the individual integration router for each flat, together with the Gira X1 Gateway. When the ISP router is installed, the home automation router is connected to it.

CONFIGURATION

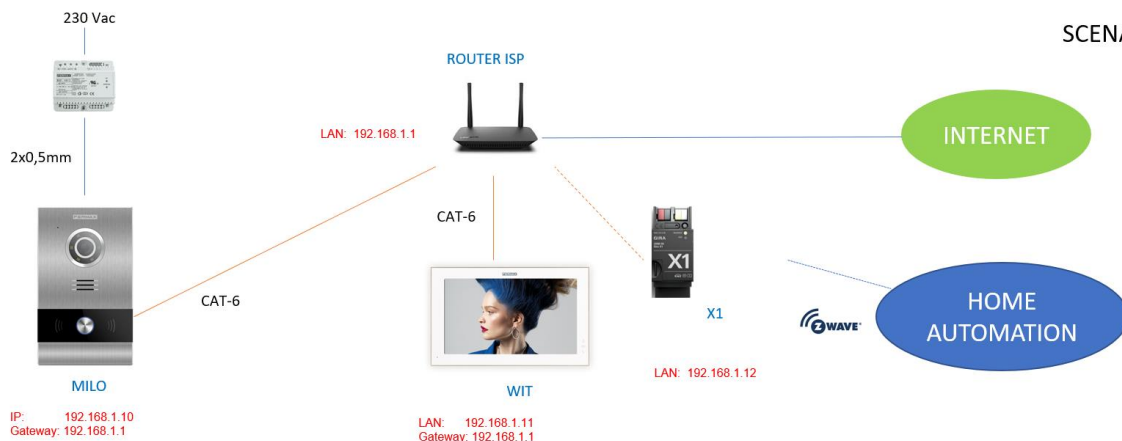
Note: The IP addresses shown below are examples. They should be chosen according to the home router or according to the building installation if the MEET system is shared with other devices.

OUTDOOR PANEL AND MONITORS

No special configuration is required as the call functionality is independent of the home automation system.

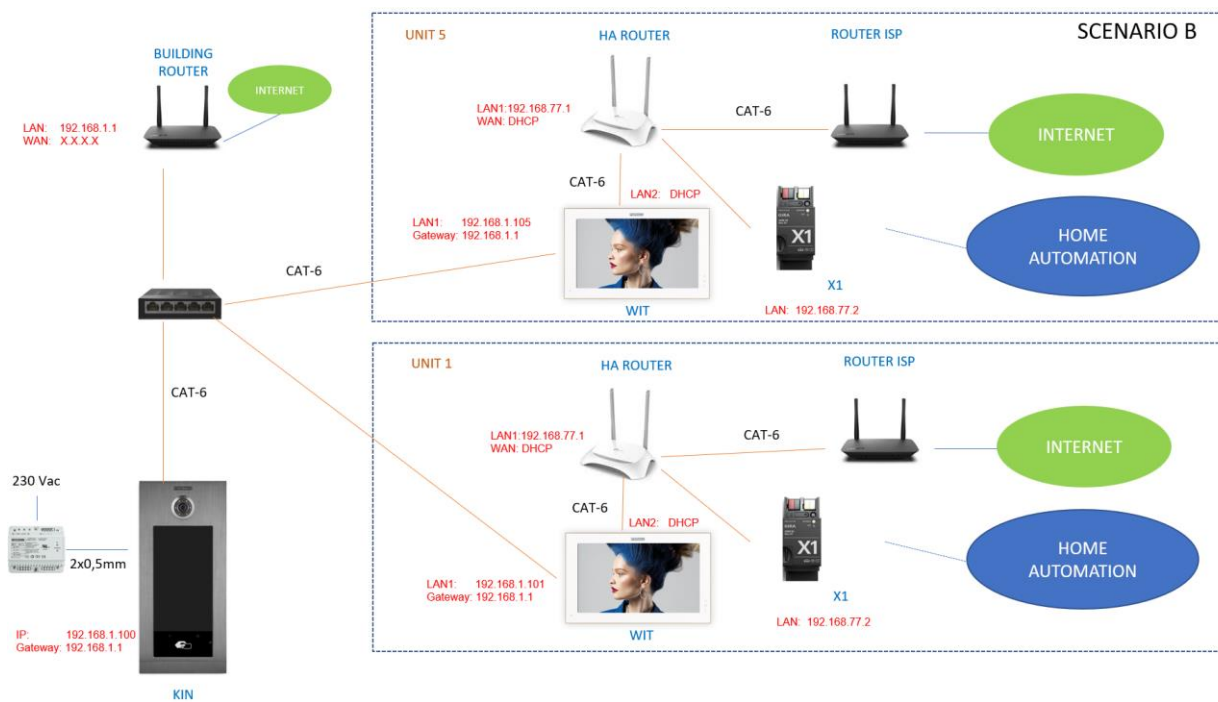
A) Single-family installation:

Assign an IP address to the entrance panel and the monitor within the home router network (e.g. 192.168.1.10 for panel and 192.168.1.11 for monitor) and as Gateway the IP address of the router (192.168.1.1).



B) Building installation

Assign the panel an IP address within the building network (e.g. 192.168.1.100) and the IP of the building router (192.168.1.1) as Gateway.
 Assign the monitors an IP address within the building network (e.g. 192.168.1.101 home monitor 1, 192.168.1.102 home monitor 2,...) and as Gateway the IP of the building router (192.168.1.1).

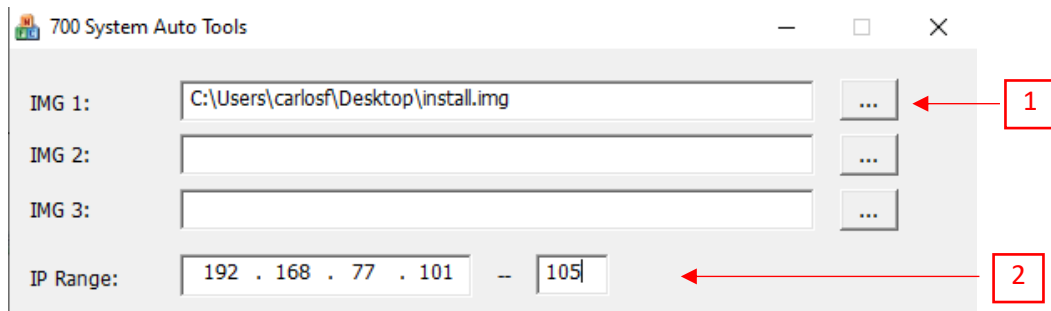


NETWORK OF EACH UNIT

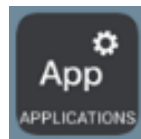
- Assign an IP to the LAN of the integration router. In our example 192.168.77.1
- Access the Gira X1 gateway via a browser and assign it a static IP (in the example 192.168.77.2), a username and a password.
- Enable DHCP on the integration router and assign addresses from 192.168.77.100 onwards.
- Assign the WAN a dynamic (DHCP) address to be obtained from the ISP router when available.

INSTALLATION GIRA SMART HOME APPLICATION ON MEET MONITOR

- i. Download the image from this [link](#)
- ii. There is an image to install and an image to uninstall. It also includes the Upgrade_Tool installation tool.
- iii. Open the MEET System Upgrade_Tool software, select the **installation** image (1) and set IP Range to run a search for the MEET monitor in the specified range of IP addresses: 192.168.77.101-105 (2).

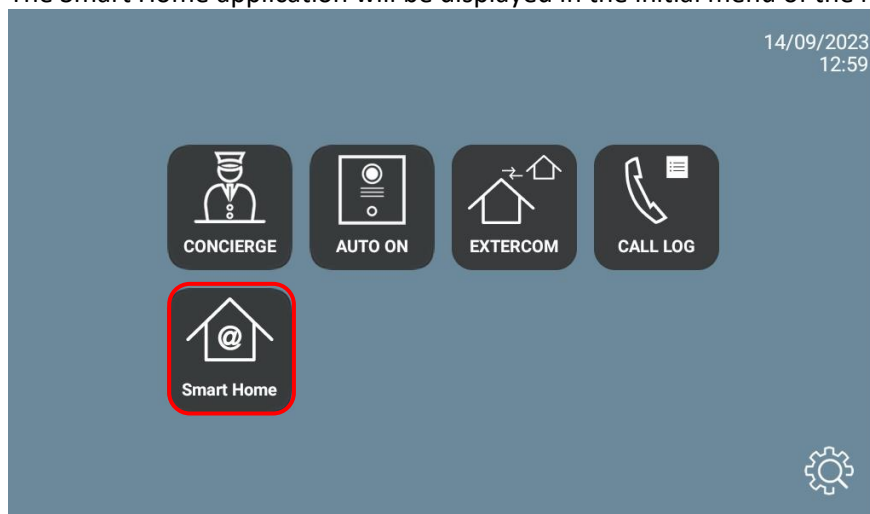


- iv. Press "Start" to start the search for MEET monitors in the selected range. Once detected, the APP will be installed, and the monitor will restart once the process is complete.
- v. In the Monitor go to the Installer menu (code 6666 by default) and open the APPS menu.

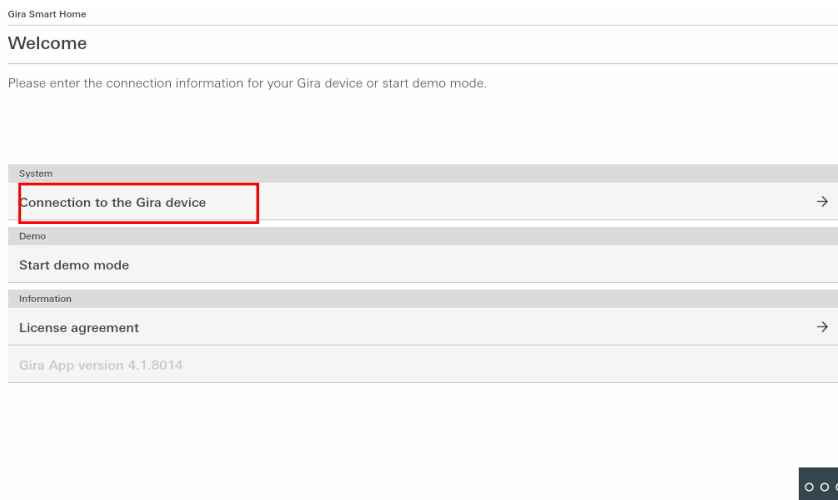


- vi. Select the "Smart Home" app and assign an icon to it. Save the settings.

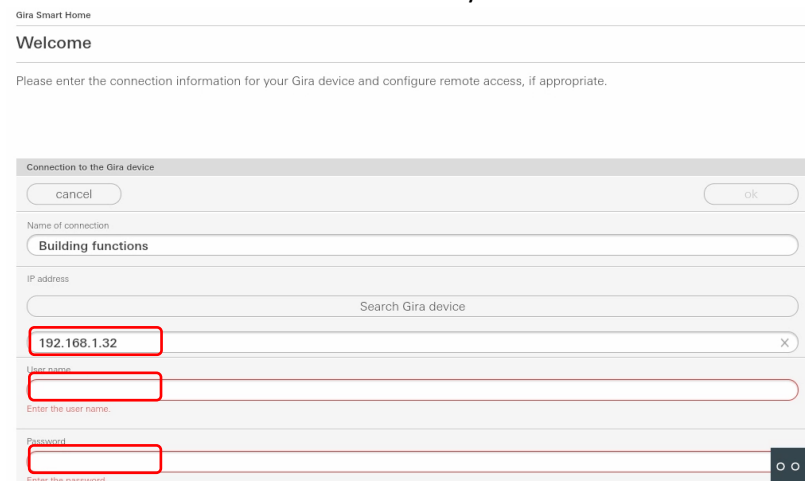
The Smart Home application will be displayed in the initial menu of the monitor.



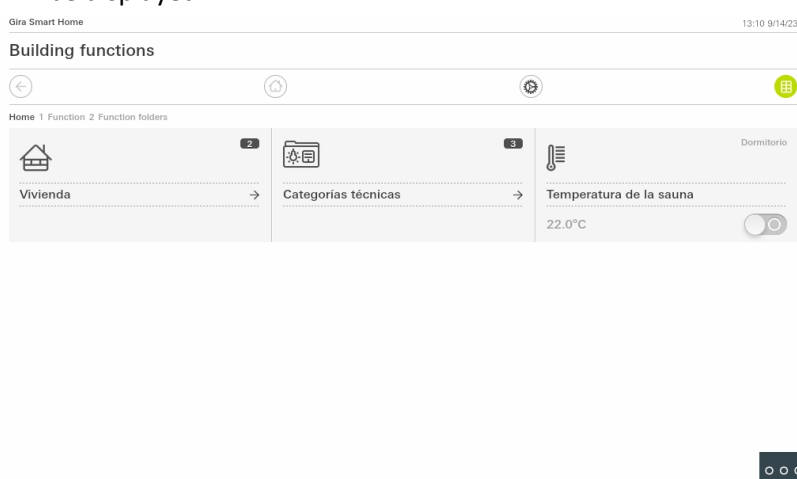
- vii. Open the APP:
 - Select GIRA device connection.



- Enter the IP address assigned to the gateway, the username and password as connection data. The IP should be detected automatically.



- After connection, the initial screen for operating the home automation system from the monitor will be displayed.



Exit the app by pressing the icon at the bottom right (3 dots) and selecting the icon in the centre (circle). The App is now configured to open on this last screen.

OPERATION

Each time the Smart Home App icon is clicked, the monitor will connect to the gateway in local mode and will open in the last screen that was previously displayed.

If a call is received from the outdoor panel, the display will be interrupted to show the image of the street. Once the conversation has ended, the display will automatically return to the Smart Home App. The display switches off after 60 seconds without activity. To activate it, simply touch the screen and the application will be displayed at the point where it was previously left off.

OTHER CONSIDERATIONS

This gateway only works with WIT monitor ref. 14721 (7") or ref.14831 (10").