



CASE STUDY

Meet system integration with Iddero Home Automation

Description

It is described how to configure the Meet entrance panel and the Iddero touch screens to be able to receive the call from the entrance panel on the screens.

INDEX

INTRODUCTION	2
REQUIRED DEVICES	2
SCHEME	2
INSTALLATION	3
COMMISSIONING	3
CALLING FUNCTION.....	12
IDDERO APP UPLOAD ON WIT MONITOR	13

INTRODUCTION

The entrance panels of the Meet system can operate in standard SIP mode, which gives them compatibility with systems from many manufacturers. In this case, we are going to see how the call from the MEET entrance panel can be sent to a HC3-KNX (7"), HC3L-KNX(10,1") or VERSO INDOOR (4,3") touch panel from Iddero. Both the Meet entrance panel and the Iddero displays can work in SIP P2P (point-to-point) mode, that is, without the need for a SIP server, which simplifies installation and configuration.

On the other hand, third-party applications can be loaded on the WIT monitor to manage home automation installations from it. In this case, the Iddero Mobile application can be loaded to manage the home automation system as if it were from the Iddero touch screen.

REQUIRED DEVICES

Any Fermax MEET entrance panel can be used to carry out this integration since they all support SIP protocol. In the case of a single-family home, the one-line MILO panel (a single button) will be used. In the case of a building or urbanization, the MILO panel can be used or, if an electronic directory is required, the KIN or MARINE panel.

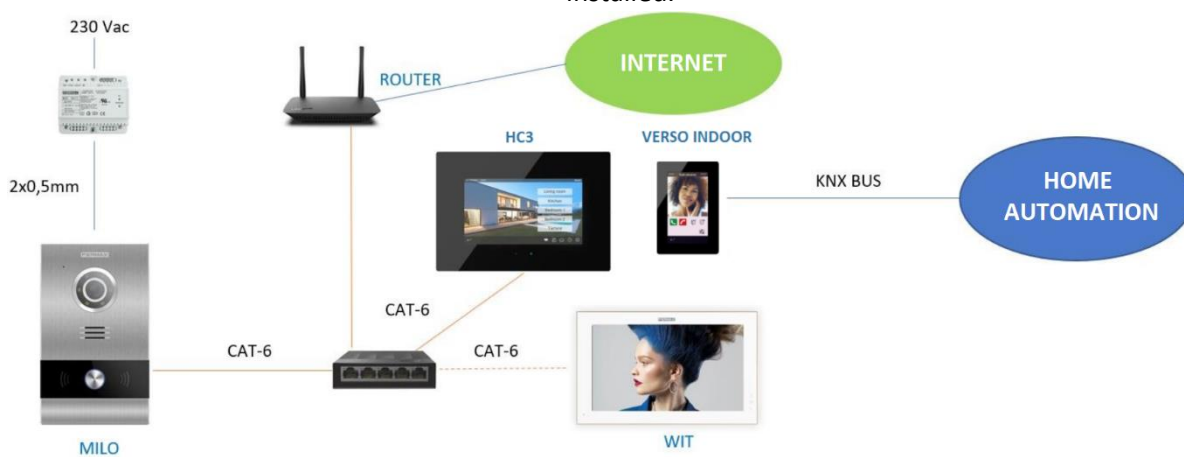
The entrance panel may require a power supply or PoE splitter if it does not support PoE, in addition to requiring the electric door opener.

Supported Meet monitors to install Iddero Mobile app are 14721 or 14831.

SCHEME

A) Single-family installation.

The usual installation scheme of the MEET system is used, with the only additional requirement of connecting the panel to the local network of the home installation, where the Iddero touch panel is installed.

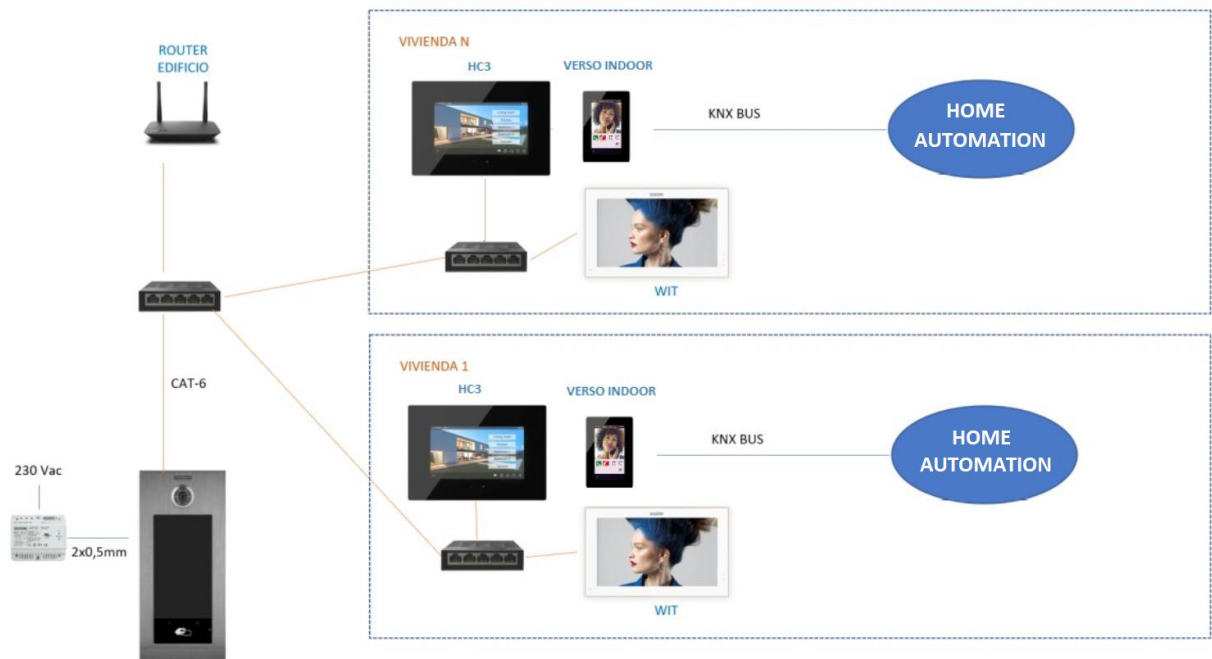


Single-family installation

The WIT monitor in the installation is optional in case you want additional monitors capable of receiving the call from the entrance panel.

B) Building installation

The installation is like that of a single-family but adding as many screens and monitors as there are homes.



Building installation

It is necessary to have a community internet connection to be able to access the screens remotely from the Iddero App. This connection is also used to forward the call to the MeetMe App.

INSTALLATION

No special requirements, following the installation protocol for a Meet system entrance panel and the corresponding part of the Iddero system.

COMMISSIONING

Note: The IP addresses shown below are examples. They must be assigned depending on the installation router address and address availability.

ENTRANCE PANEL

To configure the entrance panel, you must use a browser and access the IP address assigned to the entrance panel, by default 10.1.0.1 (building entrance panel) or 10.1.1.2 (one-line panel) and enter the user name *admin* and default password *123456*.

The following steps will be followed:

- 1) Network settings

The IP address within the local network assigned to the entrance panel and the rest of the network parameters will be indicated: mask, gateway, or router to have internet access. The IP of the software does not need to be changed if there is no building manager with the management software.

In a single-family installation (type A) an IP address will be assigned to the entrance panel in the range of the rest of the elements of the house. In a building installation, an IP address will be assigned to the entrance panel and another to each of the screens, within the same range.

DISPOSITIVO	AJUSTES DE RED
GENERAL	
CONFIG.RED	
ACCESO	
RECON. FACIAL	
CÁMARA IP	
SIP	
SIP TRUNK	
SIP CALL	
AVANZADO	

IP:	192.168.1.214
MÁSCARA:	255.255.255.0
GATEWAY:	192.168.1.1
DNS:	8.8.8.8
IP DEL SOFTWARE:	192.168.1.220
PIN DEL SOFTWARE:
<input type="button" value="GUARDAR"/>	

When saving this information, it will be necessary to connect again to the web server of the entrance panel through the new assigned IP address to continue the configuration.

2) General configuration

Parameters such as language, sound volume and resolution are indicated. It is important to set the resolution 640x480 to obtain a correct operation of the video on the Iddero touch panel. Regarding the diversion mode, select parallel so that the Iddero touch panel and the WIT monitor generate the call simultaneously.

For the 1-line panel, the configuration page is as follows:

DEVICE	GENERAL SETTINGS
GENERAL	
NETWORK	
ACC	
SIP	
SIP TRUNK	
SIP CALL	
ADVANCED	
PINCODE	
RESTORE	

TYPE:	1W PANEL
BLOCK:	1
APARTMENT:	1
DEVICE NO.:	1
DEVICE TAG:	PANEL (≤ 16 CHARACTERS)
LANGUAGE:	ENGLISH
PANEL VOLUME:	1
DOOR OPEN VOICE:	<input checked="" type="checkbox"/>
VIDEO RESOLUTION:	640x480
SIP DIVERT MODE:	PARALLEL CALL
DATE FORMAT:	DD/MM/YYYY
DATE:	01 / 01 / 2018
TIME:	22 : 55 : 43
TIME ZONE:	GMT+01:00
<input type="button" value="SAVE"/>	

For the building panel is this other:

3) Call forwarding service settings

This step is necessary if the call forwarding is to be made to the MeetMe app to receive the call from the entrance panel.

In the SIP Configuration section, the Fermax SIP server and the username and password assigned to the entrance panel will be indicated, which is indicated on the label attached to it. Next, it will be checked if the panel is correctly configured on the server by clicking on the VIEW SIP STATUS link. If REGISTERED does not appear, check the entered information.

Note: The SIP TRUNK option should not be used in this type of application.

Now you have to indicate the license for the MeetMe App:

3.1 There is a WIT monitor installed.

The Wit monitor includes a license for call forwarding. You have to configure the monitor with that license. In the ADVANCED section of the monitor's web server, configure the extension and server with the text: 'sip: user@sip.fermax.com', where user is the license.

3.2 No WIT monitor installed.

It will be necessary to acquire a call diversion license ref. 1496. The call to the Iddero touch panel and to that license will be included in the call configuration step on the entrance panel (see next section).

4) Receivers' configuration

a. Single-family panel.

In the SIP CALL section, the receiver associated with the call of the individual push-button of this panel must be indicated. The apartment '1' is indicated and the value assigned as number: sip: 1@IP_iddero_screen and click on Save. The table will automatically be filled.

APARTMENT	NUMBER	APARTMENT	NUMBER	APARTMENT	NUMBER
1	sip:1@192.168.1.78				

The WIT monitor of the home (if there is one) must be assigned that address '1' so that it receives the call at the same time as the Iddero touch panel.

If you also want to make the call diversion to the MeetMe app, and there is no Meet monitor in the home, the account of the app acquired through the license ref. 1496, separated by a ';' must be added:

<sip:1@192.168.1.78;sip:981263@sip.fermax.com>

b. Building panel.

An Excel table must be configured with the assignment of the calling code of each dwelling that has the Iddero touch panel installed. The Excel format can be downloaded from the SIP CALL section of the panel's web server, EXPORT option.

One example is the following:

Apartment,Number,			
1,sip:1@192.168.1.101			
2,sip:2@192.168.1.102			
3,sip:3@192.168.1.103;sip:786201@sip.fermax.com			

First, the house calling code is indicated and, separated by a comma, the text 'sip:' and the extension of the recipient of the call followed by @ and the IP of the Iddero touch panel within the building network.

To make the forwarding to the MeetMe app, the license of the acquired app will be included in the same line, as we have seen in the case of single-family. In the example of the third row, two receivers have been configured: the IP of the Iddero touch panel and the Meet call forwarding license, to simultaneously receive the call on the screen and on the smartphone.

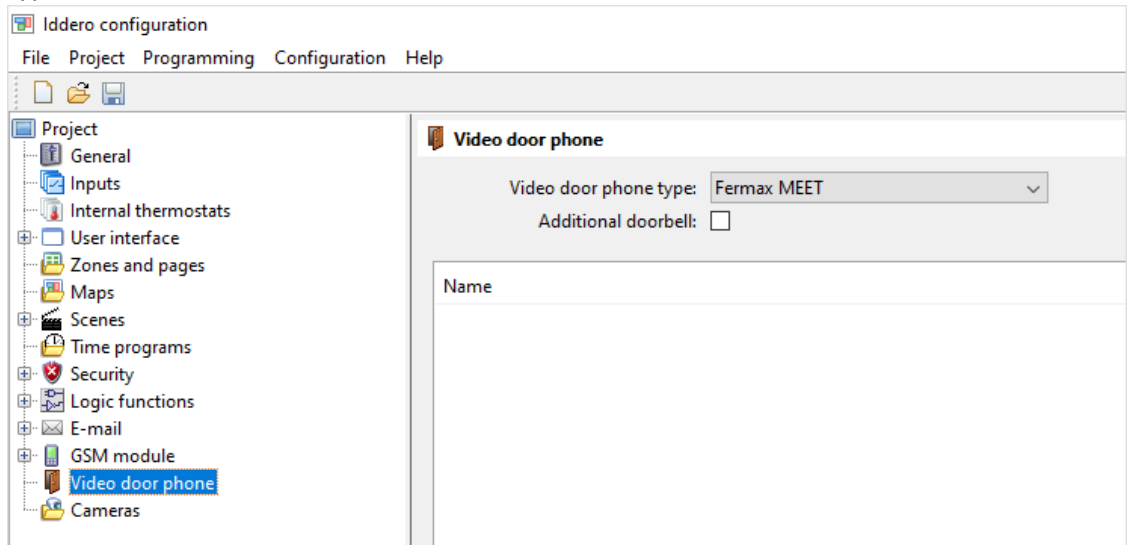
To load the Excel on the plate, select the file created and click on the IMPORT button. The Excel call list will appear on the screen. Sometimes it is necessary to refresh the browser screen by clicking on the corresponding icon:

5) Iddero screen configuration

a. HC3-KNX and HC3L-KNX touch screens

The configuration of the Iddero HC3-KNX / HC3L-KNX screens will be done from configuration software from Iddero (iddero-config), the steps to follow are:

- In the video entry section in the project's tree, select Fermax MEET as Video door phone type



- Add a new outdoor panel, and parameterize it as indicated below:

Description of each parameter:

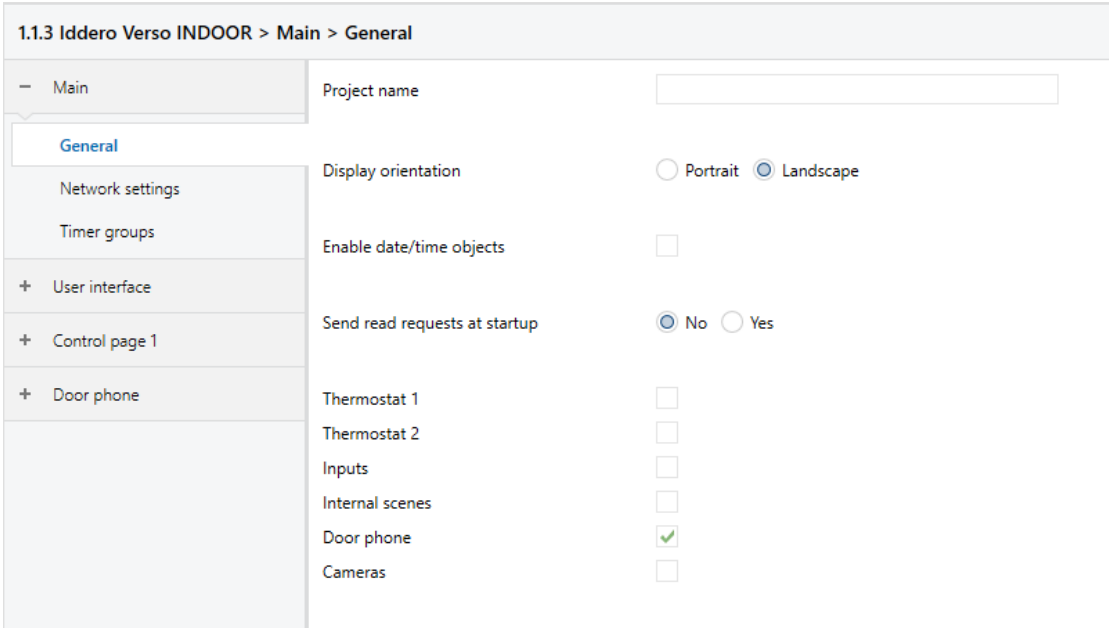
- "Name": assign a descriptive name to the outdoor panel. This name is displayed on the touch screen user interface.
- "Caller ID": the touch screen uses it to identify the caller. It is only necessary to indicate it in installations where there is more than one street panel. In this case, use the following values:
 - Block panel: BBB0099XX, where:
 - BBB= block number (zero's on the left are omitted)
 - XX= two digits for the panel number (01..99)
 - 0099 fix value
 - General Entrance panel: 200XX, where:
 - XX= two digits for the panel number (01..99)
 - 200 fix value
 - Single-family panel: X0BBB00UUUU, where:
 - X= one digit for the panel number (0..9)
 - BBB= three digits for the block number (000..999)

- UUUU= four digits for unit number (0001..9899)
 - 0 and 00 are fix
- “Video”: you can show the image from the camera of the entrance panel itself, or select an alternative camera (for example, a CCTV camera), previously defined in the “Cameras” section of the project tree.
- “Show video”: allows you to select whether the video will always be shown, only in case of an incoming call and during calls, or only during calls.
- “Open doors by”: you can select whether the opening commands will be sent via HTTP commands, or via DTMF tones. In the latter case (DTMF) it is only possible to open the door during calls.
- The “IP Address”, “User” and “Password” must be those assigned to the outdoor panel.

b. Iddero VERSO INDOOR touch screen

The configuration of the Iddero VERSO INDOOR screen is done from ETS, the standard KNX product configuration software. Below are the steps to follow.

In the “Main Settings > General” section, enable the “Video Intercom” function (and, if additional IP Cameras are to be used, also the “Cameras” function):



1.1.3 Iddero Verso INDOOR > Main > General	
– Main	Project name <input type="text"/>
General	Display orientation <input type="radio"/> Portrait <input checked="" type="radio"/> Landscape
Network settings	Enable date/time objects <input type="checkbox"/>
Timer groups	Send read requests at startup <input checked="" type="radio"/> No <input type="radio"/> Yes
+ User interface	Thermostat 1 <input type="checkbox"/>
+ Control page 1	Thermostat 2 <input type="checkbox"/>
+ Door phone	Inputs <input type="checkbox"/>
	Internal scenes <input type="checkbox"/>
	Door phone <input checked="" type="checkbox"/>
	Cameras <input type="checkbox"/>

In the “Video intercom > General” section, enable an outdoor panel:

1.1.3 Iddero Verso INDOOR > Door phone > General

+ Main	Door station 1	<input checked="" type="checkbox"/>
+ User interface	Door station 2	<input type="checkbox"/>
+ Control page 1	Door station 3	<input type="checkbox"/>
- Door phone	Door station 4	<input type="checkbox"/>
	Door station 5	<input type="checkbox"/>
	Door station 6	<input type="checkbox"/>
	Door station 7	<input type="checkbox"/>
	Door station 8	<input type="checkbox"/>
	Additional doorbell	<input type="checkbox"/>

In the “Video intercom > Door panel 1” section, in the “Video intercom type” parameter, select “Fermax MEET”, and configure the rest of the parameters, as indicated below:

1.1.3 Iddero Verso INDOOR > Door phone > Door station 1

+ Main	Door phone type	Fermax MEET
+ User interface	Name	
+ Control page 1	Caller ID	
- Door phone	Video	<input checked="" type="radio"/> Built-in camera <input type="radio"/> Alternative camera
	Show video	Always
	Open doors via	<input checked="" type="radio"/> HTTP <input type="radio"/> SIP (DTMF)
	Open door icon	180. Door open
	IP address	192.168.1.214
	Username	admin
	Password	123456
	Enable events	<input type="checkbox"/>

Description of each parameter:

- “Name”: assign a descriptive name to the outdoor panel. This name is displayed on the touch screen user interface.
- “Caller ID”: the touch screen uses it to identify the caller. It is only necessary to indicate it in installations where there is more than one street panel. In this case, use the following values:
 - Block panel: BBB0099XX, where:
 - BBB= block number (zero’s on the left are omitted)
 - XX= two digits for the panel number (01..99)
 - 0099 fix value
 - General Entrance panel: 200XX, where:
 - XX= two digits for the panel number (01..99)
 - 200 fix value

- Single-family panel: X0BBB00UUUU, where:
 - o X= one digit for the panel number (0..9)
 - o BBB= three digits for the block number (000..999)
 - o UUUU= four digits for unit number (0001..9899)
 - o 0 and 00 are fix

- “Video”: you can show the image from the camera of the entrance panel itself, or select an alternative camera (for example, a CCTV camera), previously defined in the “Cameras” section of the project tree.
- “Show video”: allows you to select whether the video will always be shown, only in case of an incoming call and during calls, or only during calls.
- “Open doors by”: you can select whether the opening commands will be sent via HTTP commands, or via DTMF tones. In the latter case (DTMF) it is only possible to open the door during calls.
- The “IP Address”, “User” and “Password” must be those assigned to the outdoor panel.

Finally, you need to add a component so that the user can navigate to the video intercom page at any time. For example, to configure component 1 on page 1:

In the “User Interface > General” section, enable “Page 1”:

1.1.3 Iddero Verso INDOOR > User interface > General		
+ Main	Page 1	<input checked="" type="checkbox"/>
- User interface	Page 2	<input type="checkbox"/>
	Page 3	<input type="checkbox"/>
General	Page 4	<input type="checkbox"/>
Power saving mode	Page 5	<input type="checkbox"/>
	Page 6	<input type="checkbox"/>

In the “Control Page 1 > General” section, enable “Component 1”:

1.1.3 Iddero Verso INDOOR > Página de control 1 > General		
+ Configuración principal	Nombre	<input type="text"/>
+ Interfaz de usuario	Icono	(ninguno) ▼
- Página de control 1	Formato de página	Posiciones fijas ▼
	Restringir acceso a página	<input checked="" type="radio"/> No <input type="radio"/> Sí
General	Componente 1	<input checked="" type="checkbox"/>
+ Videopuerta	Componente 2	<input type="checkbox"/>
	Componente 3	<input type="checkbox"/>

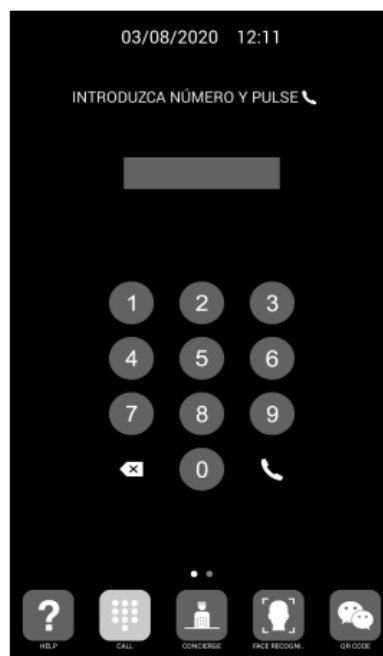
In the “Control Page 1 > Component 1” section, configure the “Component Type” as “Link to Video Intercom Page”:

1.1.3 Iddero Verso INDOOR > Control page 1 > Component 1

+ Main	Name	<input type="text"/>
+ User interface	Component type	Door phone page link
- Control page 1	Button icon	180. Door open
General		
Component 1		
+ Door phone		

CALLING FUNCTION

To call the specific dwelling, you must press the individual button (one-line panel) or enter the associated call code and confirm with the bell button or pick-up icon on the KIN panel.



Direct call through code

The panel will generate the call both to the Meet monitor in the home (if it exists) and to the Iddero touch screen and MeetMe App (if configured), which will announce the call from the panel together with the image captured by the camera. You can choose to have the call go to the Meet monitor first (sequential call) or in parallel. The call will ring a maximum of 30".

Pressing the off-hook button will establish bi-directional audio communication. The timing is limited to 120". You have the option of opening the door at any time. If the call is received on several devices (monitor, screen, app), the first one to answer will cause the call melody to cease in the rest and it will no longer be possible to answer from them.

If there is more than one outdoor panel configured, you can toggle the connection to each one of them by clicking on the image shown of the current outdoor panel.

It is also possible to display the camera of the street panel as a security camera from the Iddero touch panel if the camera has been configured in the corresponding section.

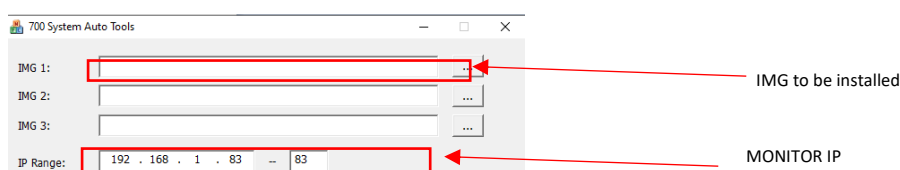
IDDERO APP UPLOAD ON WIT MONITOR

First of all, you have to create an Idderocloud account to be able to access from the app:

1. Access the web <https://www.idderocloud.com/login>
2. Create a new account. Enter a valid email account and password.
3. Confirm account by opening the link in the confirmation email received.
4. Download Iddero Mobile app (iOS and Android compatible) and introduce the idderocloud credentials.
5. Link the touch screen with the idderocloud account, following the instructions in the product documentation or on the website www.idderocloud.com. Once linked, it will appear in the app's list of devices.

Download the file from the following [link](#) and connect to the IP video intercom network where the MEET Monitors are located.

Open the MEET System Upgrade Tool software, select the file Iddero_install_a10 as IMG1 and set the IP address range of the monitor(s), in the example 192.168.1.83-83 (single monitor).



Press "Start" to begin downloading the application to the monitor(s).

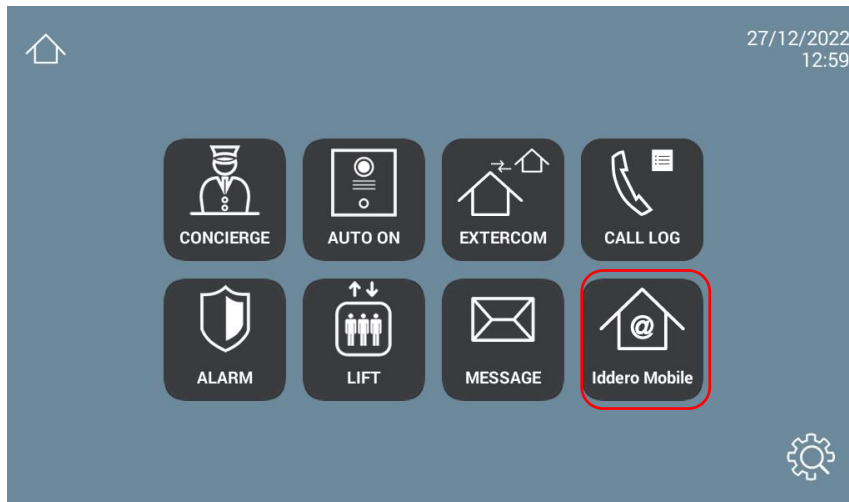
Once the monitor is installed it will restart.

Monitor > Go to the Installer menu (password 6666) and open the APPs menu.

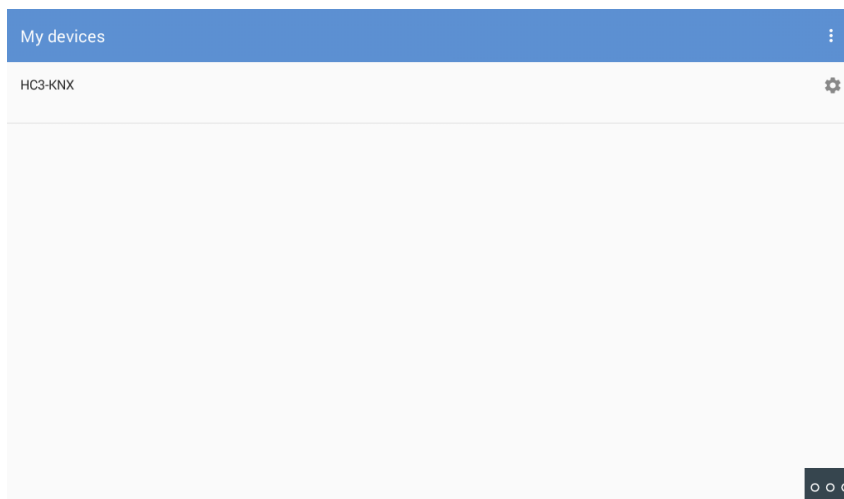


Select the "Iddero Mobile" APP and assign an icon to it. Save the changes

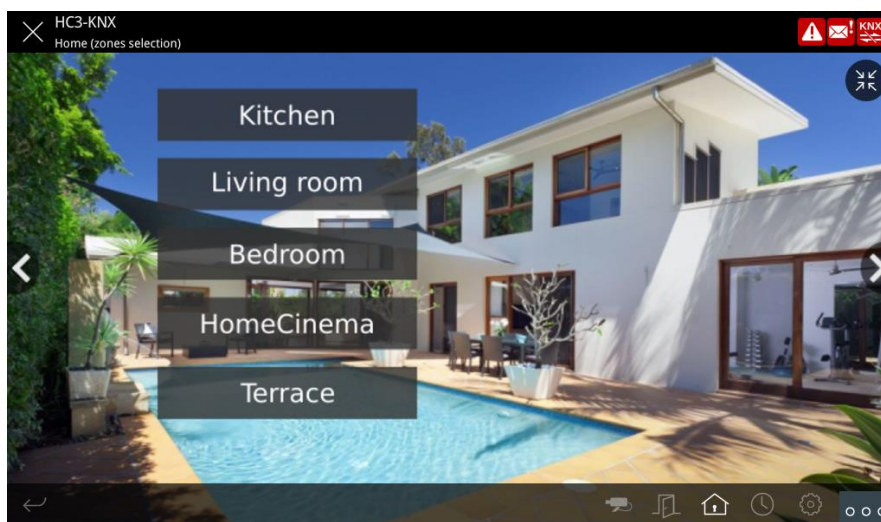
The application will be displayed on the home screen of the monitor.



Once we open it, we must enter the idderocloud username and password that we have created.
Select the associated Iddero touch creen (in the example below it is linked to an HC3-KNX screen).



Navigate the same as it is done from the Iddero touch screen. The operation is identical except that the action confirmation sounds on the icons are not played.



The option of street panels and video cameras are not available since the internal application of the WIT monitor is used for communication with the outdoor panel.

The application can remain always active, like on an Iddero touch screen. When a call is received, it will be temporarily interrupted to answer it and, when the call is finished, it will be displayed again at the main menu. The monitor has a 60 second time-out to return to sleep mode in which the screen turns off, if not acted on, to maintain the durability of the TFT and reduce consumption. Touching the screen again will redisplay the application at the same point it was displayed before rest.