

CASE STUDY

MEET/BAB-TEC EIBPORT Integration

Description

This document describes how to configure a MEET monitor to integrate it with a BAB-TEC EIBPORT gateway

TABLE OF CONTENTS

INTRODUCTION	2
REQUIRED DEVICES	2
BASIC SCHEME.....	2
COMISSIONING.....	3
APP USAGE	5
OTHER CONSIDERATIONS.....	5

INTRODUCTION

The following document explains how to integrate MEET Door Entry System and KNX system, using a eibPort V3 KNX-TP. Once the integration is done, control of KNX system via MEET monitor will be possible using an APP installed in the monitor.

Described steps apply to Building projects. Its main objective is to ensure the initial operation of different devices and systems, without requiring an already existing internet connection -and an installed router-, as well as avoiding additional visits from our side to finish the commissioning.

In the case of a single-family installation, the Integration Router will not be necessary.

REQUIRED DEVICES

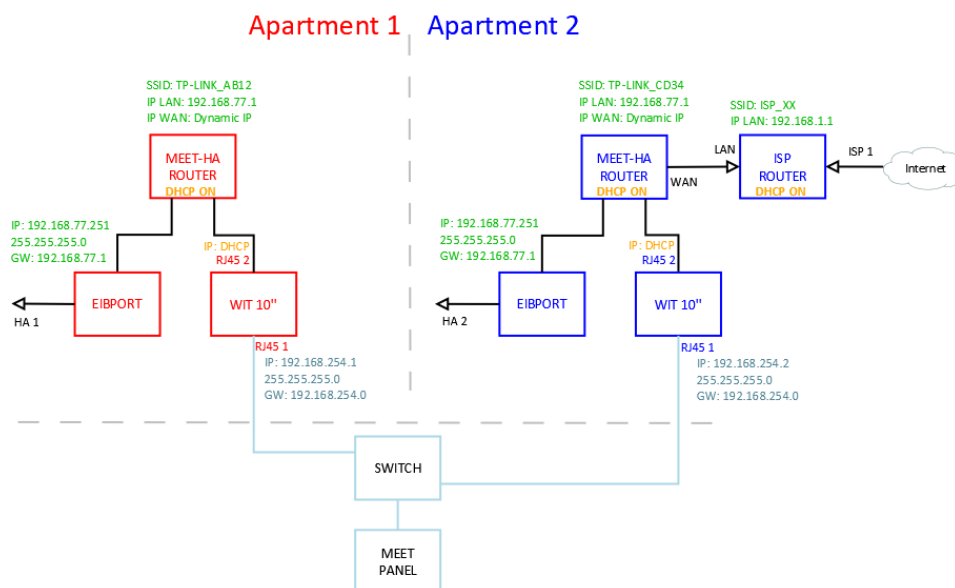
Per apartment:

- Ref. 14831 / WIT 10" Monitor. It is also possible to use ref.14721/WIT 7" monitor in case of villa.
- Ref. 95411 / NEO/WIT connector monitor
- Ref. 7668 / MEET-HA integration router
- eibPort V3 KNX-TP gateway

BASIC SCHEME

Apartment 1 without an internet connection

Apartment 2 with an internet connection



COMISSIONING

Resume

1. Office	eibPort configuration	1. Change default IP address and gateway: 192.168.0.10 to 192.168.77.251
	Router configuration	2. Connect your laptop and eibPort to MEET-HA integration router 3. Configure MEET-HA integration router IP address: 192.168.77.1
	WIT 10" configuration	4. Conect RJ45 1 & 2 to MEET-HA integration router 5. Install the APP INTEGRA 6. Open APP -> Settings: Connection to IP address 192.168.77.251
2. Installation	Verifications	7. Power on MEET-HA integration router and eibPort gateway 8. Connect: i. WIT 10" RJ45 1 (MEET) to MEET network ii. WIT 10" RJ45 2 (APARTMENT) to any LAN port of MEET-HA integration router iii. eibPort gateway to any LAN port of MEET-HA integration router 9. Verifications: iv. Visualization eibPort via WIT 10" monitor
		10. ISP router installation 11. Connect MEET-HA integration router WAN por to any LAN port of ISP router
3. Apartment	Remote control (end user)	

Office tasks are described below.

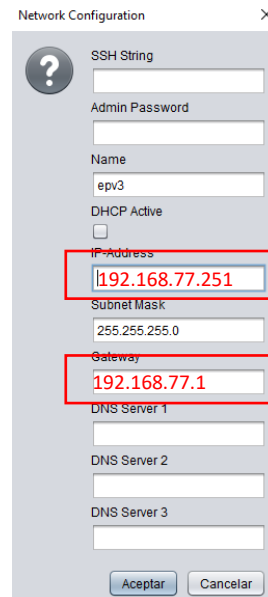
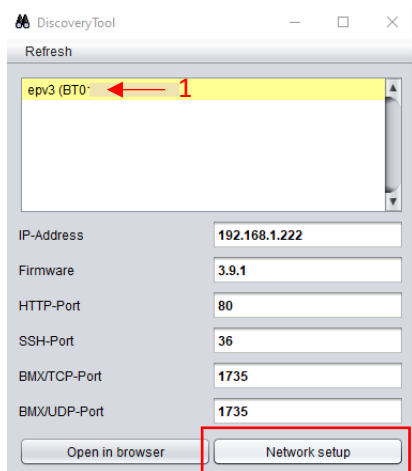
NOTE: Described IP address changes (eibPort & MEET-HA integration router) serves the only purpose of creating a network (192.168.77.x) which doesn't match the default IP address of the router installed by the ISP (generally 192.168.0.x or 1.x).

1. eibPort gateway configuration

Connect the eibPort to MEET-HA router.

Default	IP address: 192.168.1.222 Gateway: 192.168.1.1
Required	IP address: 192.168.77.251 Gateway: 192.168.77.1

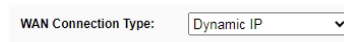
Please see Bab-tec DiscoveryTool: [Enlace](#)



Save changes. The device will reboot with the new settings.

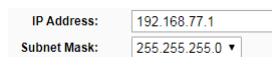
2. MEET-HA Integration router configuration

- i. Connect your laptop to MEET-HA router
- ii. Open the following link using any web browser <http://192.168.1.1>
User: admin; Password: admin
- iii. Network > WAN > Confirm WAN connection type is set to “Dynamic IP”



WAN Connection Type:

- iv. Network > LAN > Change router IP address to 192.168.77.1 and save changes



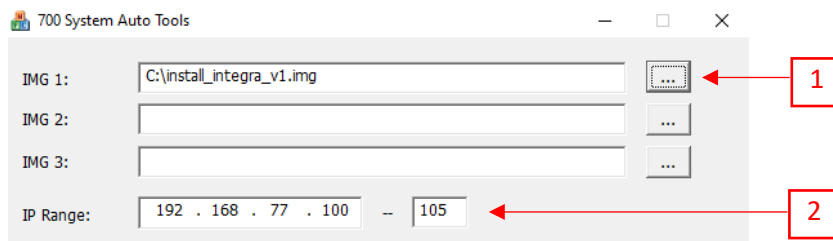
IP Address:
Subnet Mask:

HA-MEET router will reboot.

3. WIT 10” monitor configuration

Prerequisites:

- RJ45 (MEET) connected to MEET network (or temporarily to MEET-HA router)
 - RJ45 (APARTMENT) connected to any LAN port of MEET-HA router
- i. Download INTEGRA app: [Link](#)
 - ii. Open MEET System Upgrade Tool, select INTEGRA APP (1) and adjust MEET monitor IP address range (2) to search for any MEET monitor with an IP address assigned automatically via DHCP: 192.168.77.100-105.



- iii. Press “Start” to begin APP installation.

Once the monitor is detected, the APP will be installed, and the monitor will reboot.

- iv. Monitor > Go to “Installer” menu and press “APPLICATIONS” button



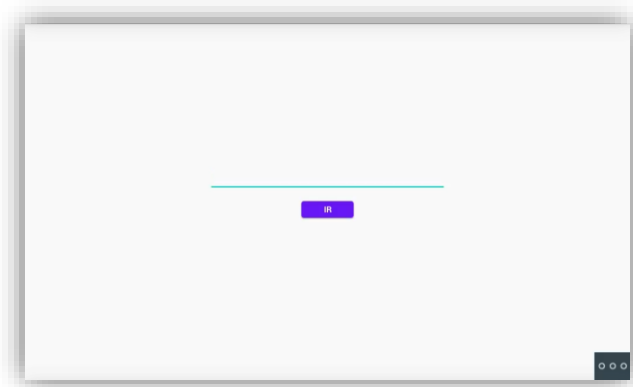
- v. Choose "INTEGRA" app, assign it an icon and saves changes.

INTEGRA APP will show in Main menu.





APP USAGE

Open the APP and write the URL of the HA device:



Visualization	URL
Control L	http://192.168.77.251/web.visu/

Press "GO". The visualization will be shown.

In case of needing to modify the URL, please press  and then . Click on the top left, bottom left and top right corner (a confirmation rectangle should be displayed each time) and you can now change the URL.

OTHER CONSIDERATIONS

FW monitor WIT: V03.50

APP Integra v1.1

FW eibPort+: [3.9.1](#)