



CASE STUDY

MEET-SCHNEIDER ELECTRIC Integration

Description

This document describes how to configure a MEET monitor to integrate it with a WISER for KNX gateway

TABLE OF CONTENTS

INTRODUCTION 2

REQUIRED DEVICES 2

BASIC SCHEME..... 2

COMISSIONING..... 3

APP USAGE 5

OTHER CONSIDERATIONS..... 6

INTRODUCTION

The following document explains how to integrate MEET Door Entry System and KNX system, using a WISER for KNX gateway and Integra app from Fermax installed on WIT monitor.

The steps described apply to Building projects and have as their main objective to ensure the operation of the different equipment and systems without requiring the initial existence of an internet connection in the home, in addition to enabling the installer to carry out the commissioning, without requiring an additional trip to the home.

In the case of a single-family installation, the Integration Router will not be necessary.

REQUIRED DEVICES

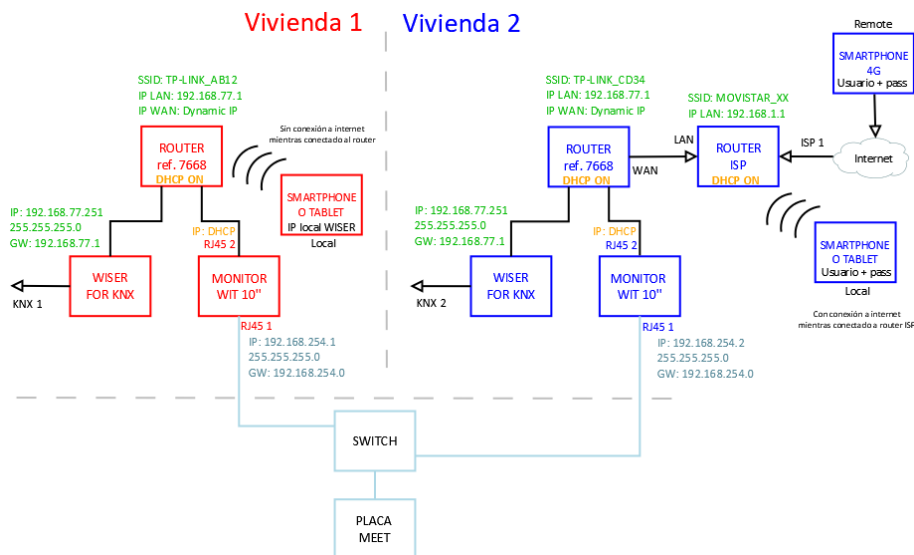
Per apartment:

- Ref. 14831 / WIT 10" Monitor. It is also possible to use ref.14721/WIT 7" monitor in case of villa.
- Ref. 95411 / NEO/WIT connector monitor
- Ref. 7668 / MEET-HA integration router (not required in villa project)
- Schneider Electric WISER FOR KNX gateway

BASIC SCHEME

Apartment 1 without an internet connection

Apartment 2 with an internet connection



COMISSIONING

Resume

1. Office	WISER FOR KNX configuration	1. Change default IP address and gateway: 192.168.0.10 to 192.168.77.251
	Router configuration	2. Connect your laptop and WISER FOR KNX to MEET-HA integration router 3. Configure MEET-HA integration router IP address: 192.168.77.1
	WIT 10" configuration	4. Conect RJ45 1 & 2 to MEET-HA integration router 5. Install the APP WISER FOR KNX 6. Open APP -> Settings: Connection to IP address 192.168.77.251
2. Installation	Verifications	7. Power on MEET-HA integration router and WISER FOR KNX gateway 8. Connect: i. WIT 10" RJ45 1 (MEET) to MEET network ii. WIT 10" RJ45 2 (APARTMENT) to any LAN port of MEET-HA integration router iii. Wiser for KNX gateway to any LAN port of MEET-HA integration router 9. Verifications: iv. Visualization Wiser for KNX via WIT 10" monitor
		10. ISP router installation 11. Connect MEET-HA integration router WAN por to any LAN port of ISP router
3. Apartment	Remote control (end user)	

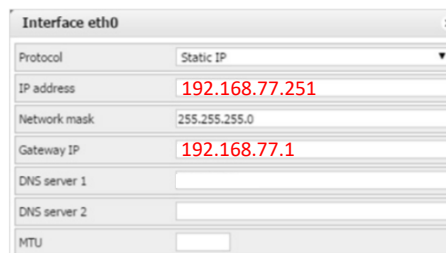
Office tasks are described below.

NOTE: Described IP address changes (Wiser for KNX & MEET-HA integration router) serves the only purpose of creating a network (192.168.77.x) which doesn't match the default IP address of the router installed by the ISP (generally 192.168.0.x or 1.x).

1. WISER FOR KNX gateway configuration

Default	IP address: 192.168.0.10 Gateway: 192.168.0.1
Required	IP address: 192.168.77.251 Gateway: 192.168.77.1

Please check WISER FOR KNX manual.

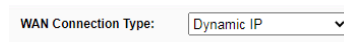


Save changes. The device will reboot with the new settings.

Connect WISER FOR KNX to MEET-HA router.

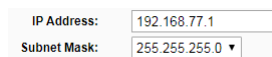
2. MEET-HA Integration router configuration

- i. Connect your laptop to MEET-HA router
- ii. Open the following link using any web browser <http://192.168.1.1>
User: admin; Password: admin
- iii. Network > WAN > Confirm WAN connection type is set to “Dynamic IP”



WAN Connection Type:

- iv. Network > LAN > Change router IP address to 192.168.77.1 and save changes



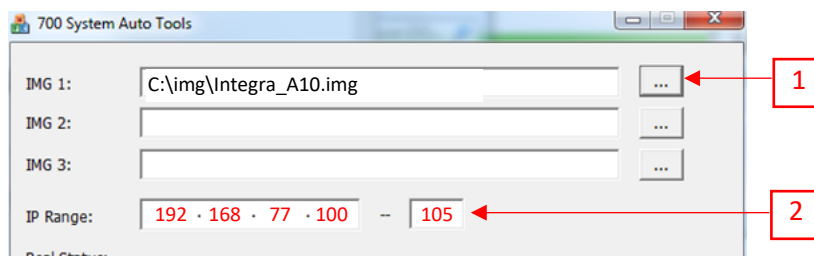
IP Address:
Subnet Mask:

HA-MEET router will reboot.

3. WIT 10” monitor configuration

Prerequisites:

- RJ45 (MEET) connected to MEET network (or temporarily to MEET-HA router)
 - RJ45 (APARTMENT) connected to any LAN port of MEET-HA router
- i. Download INTEGRA app: [Link](#)
 - ii. Open MEET System Upgrade Tool, select downloaded Integra_A10 APP (1) and adjust MEET monitor IP address range (2) in order to search for any MEET monitor with an IP address assigned automatically via DHCP: 192.168.77.100-100. Another option is to connect the PC to the MEET building network and enter the static IP of the monitor.



- iii. Press “Start” to begin APP installation.

Once the monitor is detected, the APP will be installed, and the monitor will reboot.

- iv. Monitor > Go to “Installer” menu and press “APPLICATIONS” button



- v. Choose "INTEGRA" app, assign it an icon and saves changes.

INTEGRA APP will show in Main menu.



APP USAGE

Open the APP and adjust URL:

- You must enter the value `http://user:password@IP_address` of the Wiser for KNX device: 192.168.77.251. Example: <http://admin:admin@192.168.77.251>



- Press "GO".

If configured correctly, the Wiser for KNX screen will be displayed. The next time we access it, it will not be necessary to enter the URL.

OTHER CONSIDERATIONS

- Compatible visualizations:
 - PC/Tablet
 - Smartphone
 - Touch 2 (FW 2.5.1, without upgrading to Touch 3)
 - Touch 3
- WIT monitor FW: V03.50T
- If the browser URL has been entered incorrectly, it can be changed by pressing the 3 dots below the screen (1), a lower menu will appear. Press the left arrow (2), and it will show the URL option. Click on the top left, bottom left and top right corner (a confirmation rectangle should be displayed each time) and you can now change the URL (3).

