



# CASE STUDY

## MEET-SHELLY Integration

### Description

This document tries to summarize the steps to follow to integrate a MEET monitor with the SHELLY device ecosystem.

## INDEX

INTRODUCTION .....	2
REQUESTED MATERIAL.....	2
BASIC DIAGRAM .....	2
INSTALLATION .....	2
COMMISIONING .....	2
WORKING MODE.....	3

## INTRODUCTION

The purpose of this document is to present the steps to follow to achieve control of a SHELLY home automation installation from MEET monitors, using the SHELLY cloud service. SHELLY devices connect directly to the home router via WiFi connectivity and the MEET monitor must be connected to the internet. The registration of the devices must be done from a smartphone with the SHELLY SMART CONTROL application since the MEET monitor does not have WiFi or Bluetooth connectivity.

The steps described apply to single-family and building projects and it is an essential requirement to have an internet connection in each home.

## REQUESTED MATERIAL

In each house:

- Ref. 14831/ WIT 10" Monitor
- Ref. 95411 / NEO/WIT Monitor Connector
- SHELLY devices to be controlled.

## BASIC DIAGRAM

The usual scheme of a MEET installation is used, whether single-family or building.

## INSTALLATION

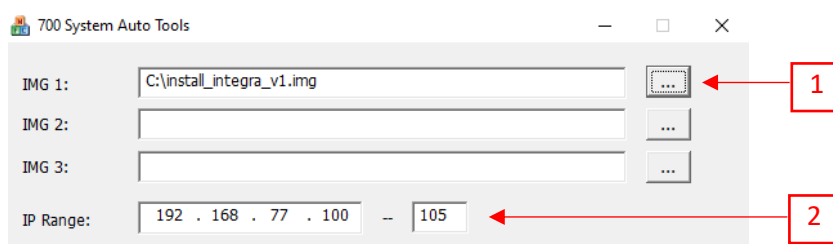
Make the connections according to the basic MEET diagram. The MEET monitor is connected to the IP video door entry installation through the RJ-45 labeled MEET (PoE), from which it is powered, and to the home router through the RJ45 labeled APARTMENT, keeping the home's local network isolated of the rest of the homes and the video intercom installation. In the case of a single-family home, only the MEET connector must be connected to the local network and, in this case, it is possible to use the 7" WIT monitor ref 14721, which includes only one RJ-45.

## COMMISIONING

Below are the steps to follow to install the application on the WIT monitor.

### Configuration of the WIT 10" monitor

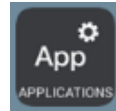
- Download INTEGRA app: [Link](#)
- Open the MEET System Upgrade Tool software, select the appropriate image (INTEGRA) (1) and set the IP address range so that a search for the MEET monitor(s) is executed in the initial address range IP (2).



iii. Press “Start” to start the search for MEET monitors in the selected range.

Once detected, the APP will be installed, and the monitor will restart at the end of the process.

iv. On the monitor, go to the installer menu (password 6666) and open the APPS menu.



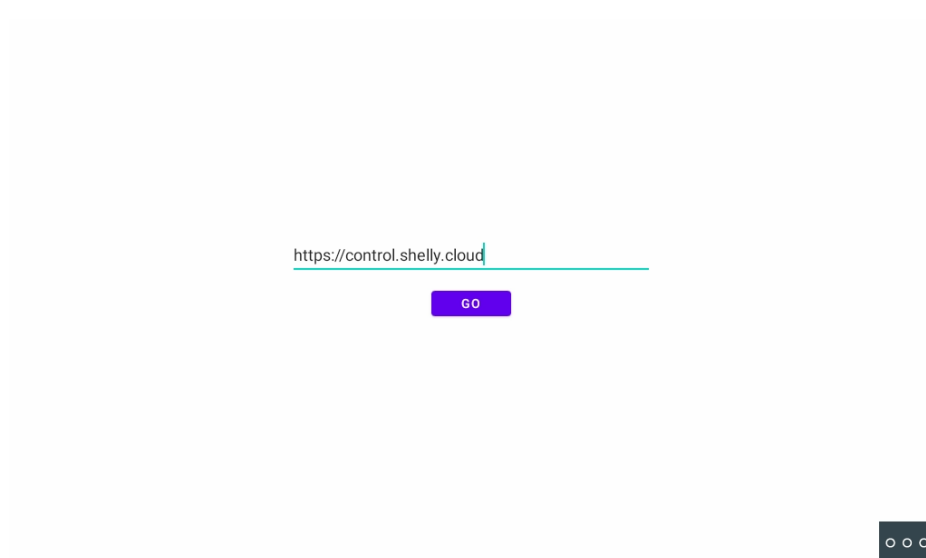
v. Select the “INTEGRA” app and assign an icon to it. Save settings.

The INTEGRA application will be displayed in the initial menu of the monitor.

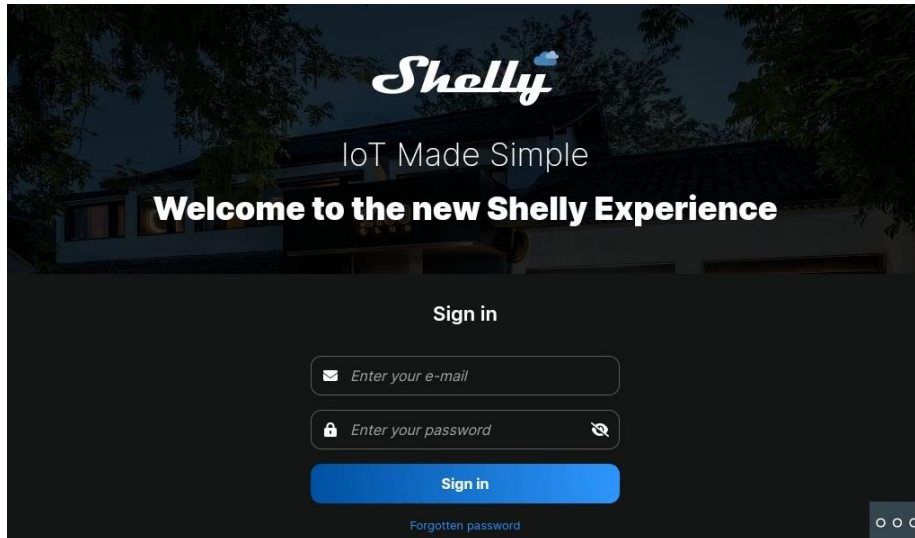


## WORKING MODE

Open the INTEGRA APP by clicking on the INTEGRA icon and enter the Shelly cloud URL:  
<https://control.shelly.cloud/>

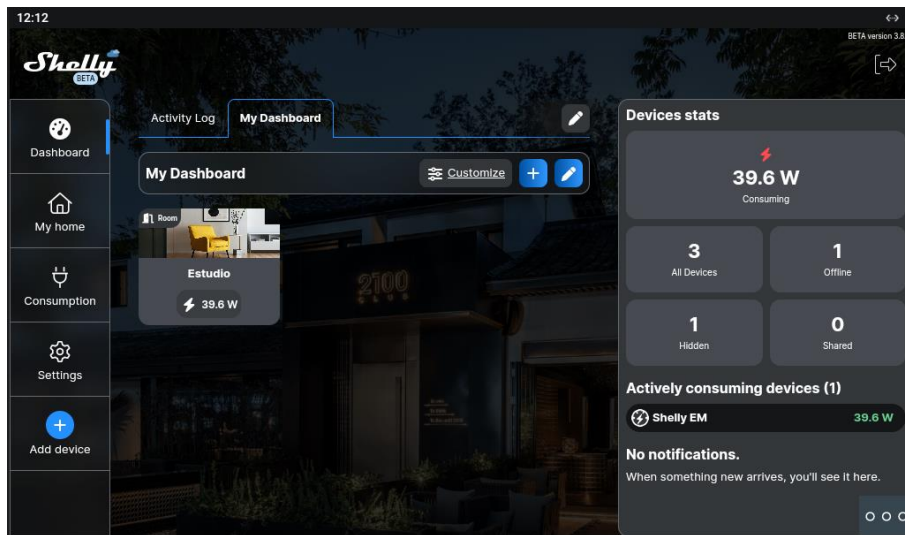


Only requested the first time. Next, enter the credentials of the installation user:

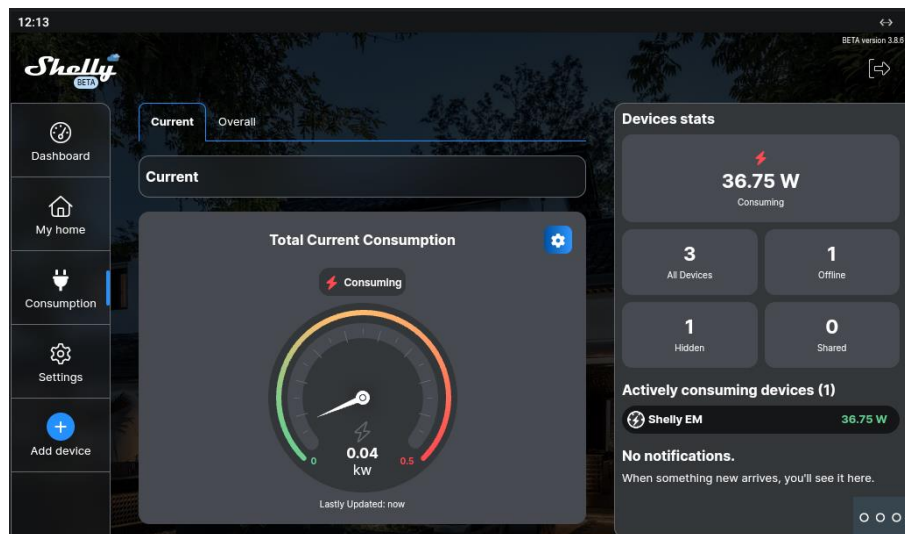


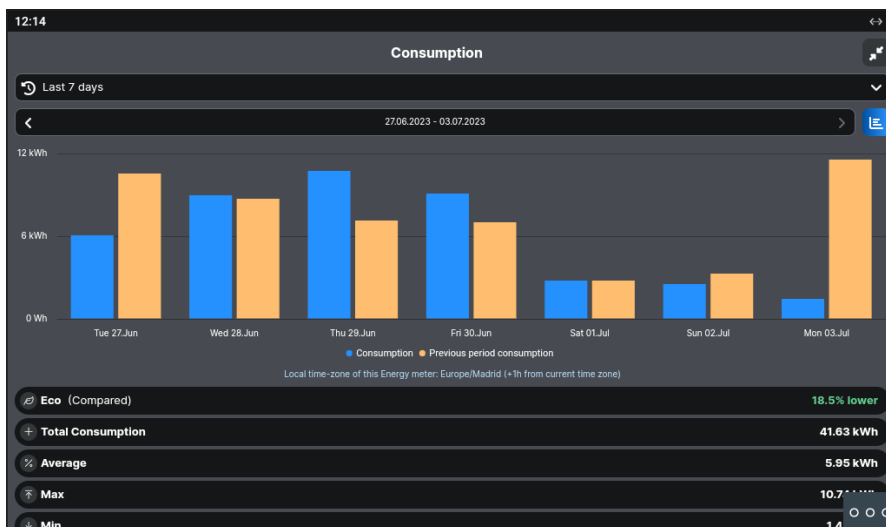
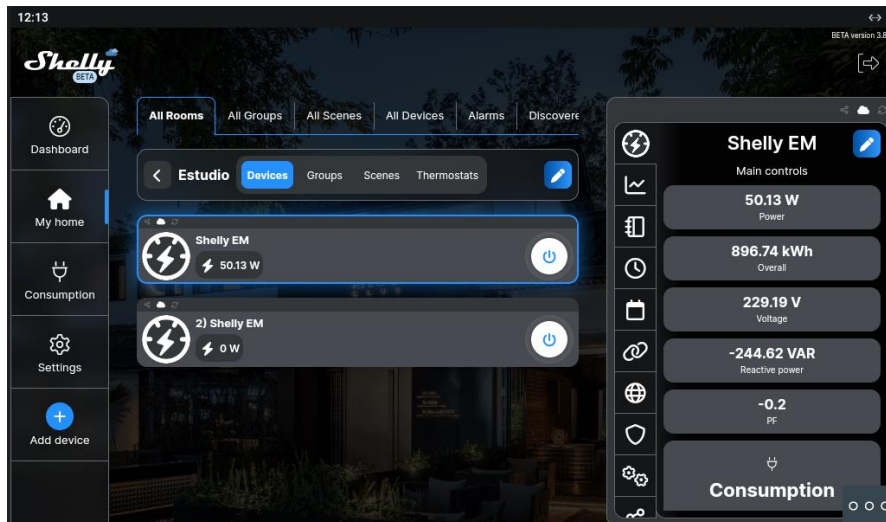
It is also requested only once. The next times the app is opened it will go directly to the next screen.



The welcome screen for that installation will appear and it will now be possible to operate on it:



You can navigate through the different pages:





In case you want to modify the URL, you can do it by pressing the button  and then . Click on the top left, bottom left and top right corner (a confirmation rectangle should be displayed each time) and you can now change the URL.

To exit the application, you must press the button  and then .

If a call is received with the application open, it can be answered and when finished, it will return to the same, at the point where it had left off.

#### **OTHER CONSIDERATIONS**

Integra App version: A10\_v1.1

WIT monitor FW: V03.50 or later.