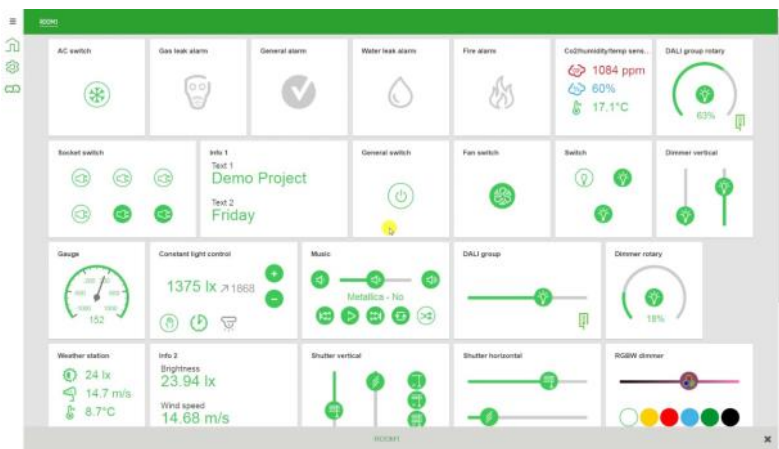
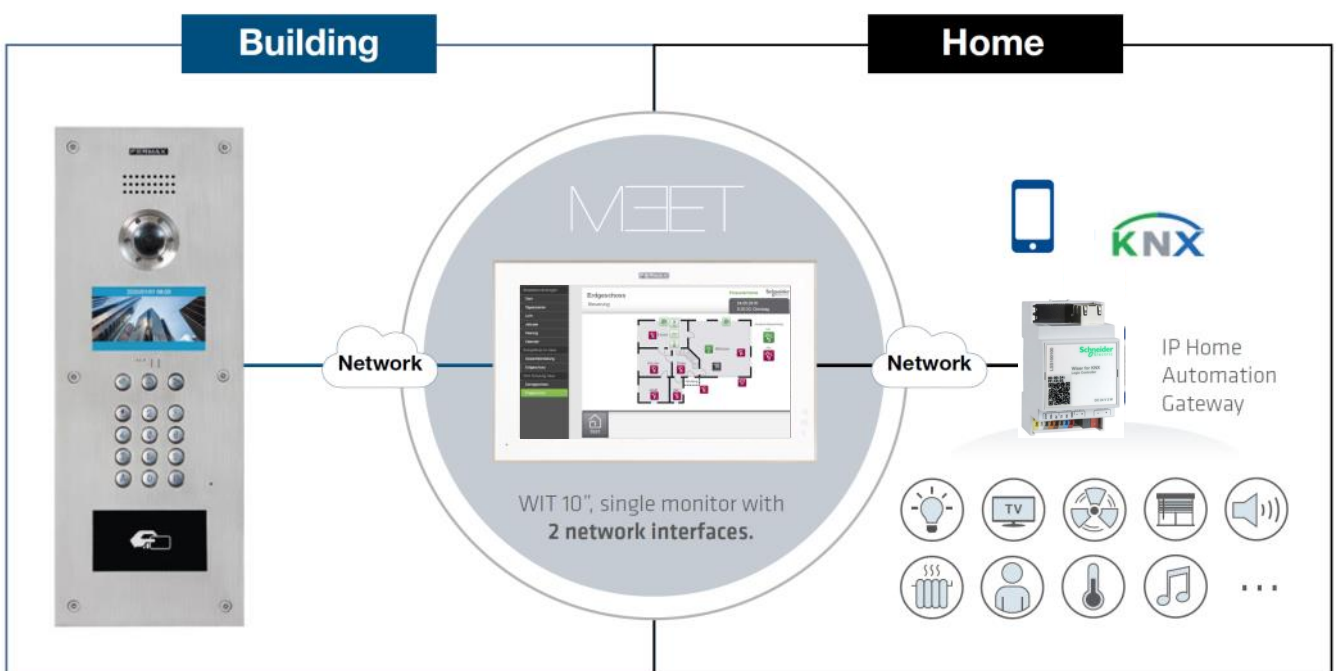


## SUCCESS CASE

### MEET IP INTERCOM AND WISER FOR KNX



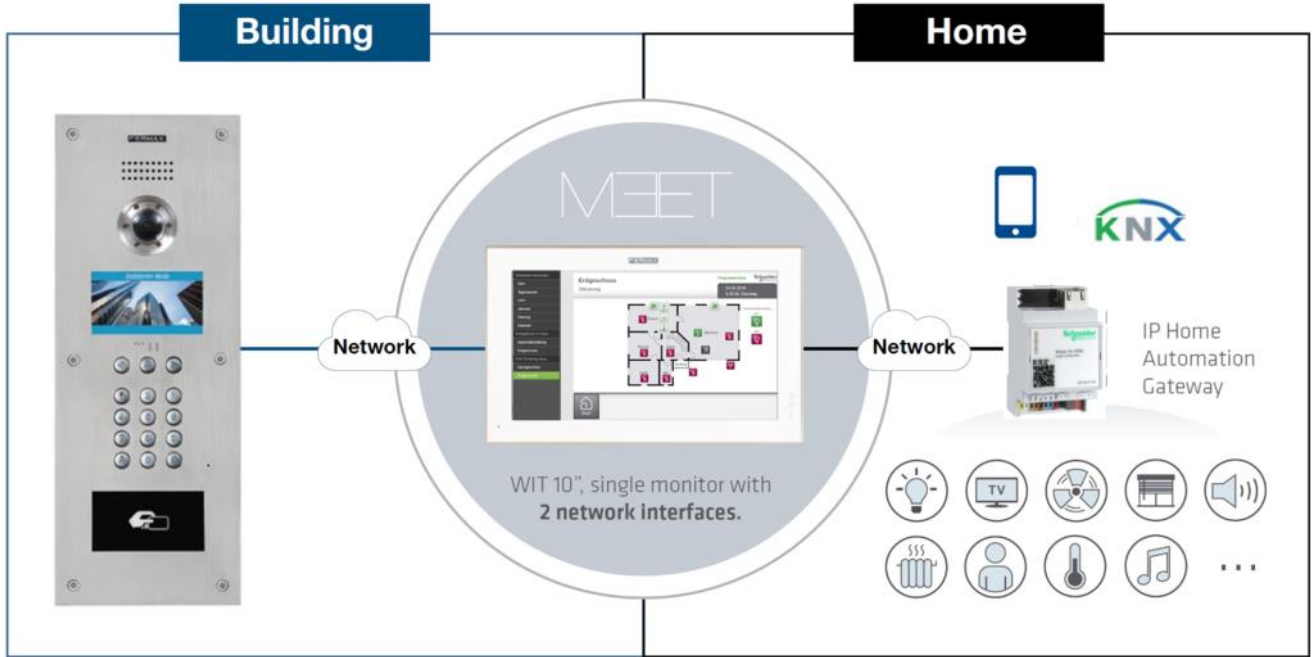
## WISER FOR KNX GATEWAY INTEGRATION



## WISER AND MEET IP SYSTEM INTEGRATION

It is possible to reduce costs on home automation projects by integrating the video intercom system with the home automation using MEET indoor monitors as the main user interface to control SCHNEIDER home automation.

## SYSTEM ARCHITECTURE



## FUNCTIONALITIES



APP CALL DIVERT ON SMARTPHONE



SMARTPHONE HOME AUTOMATION CONTROL

HOME AUTOMATION CONTROL FROM INDOOR MONITOR



ALARM RECEPTION ON MONITOR



INTERNAL MONITOR INTERCOM



IP CAMERA VISUALIZATION FROM MONITOR

## BENEFITS



- Integration costs are decreased by using a single touch screen, the MEET indoor monitor, instead of 2 touch screens for home automation and video intercom.



- Solution aesthetic is improved since the amount of devices is minimized to 1 single intercom monitor.



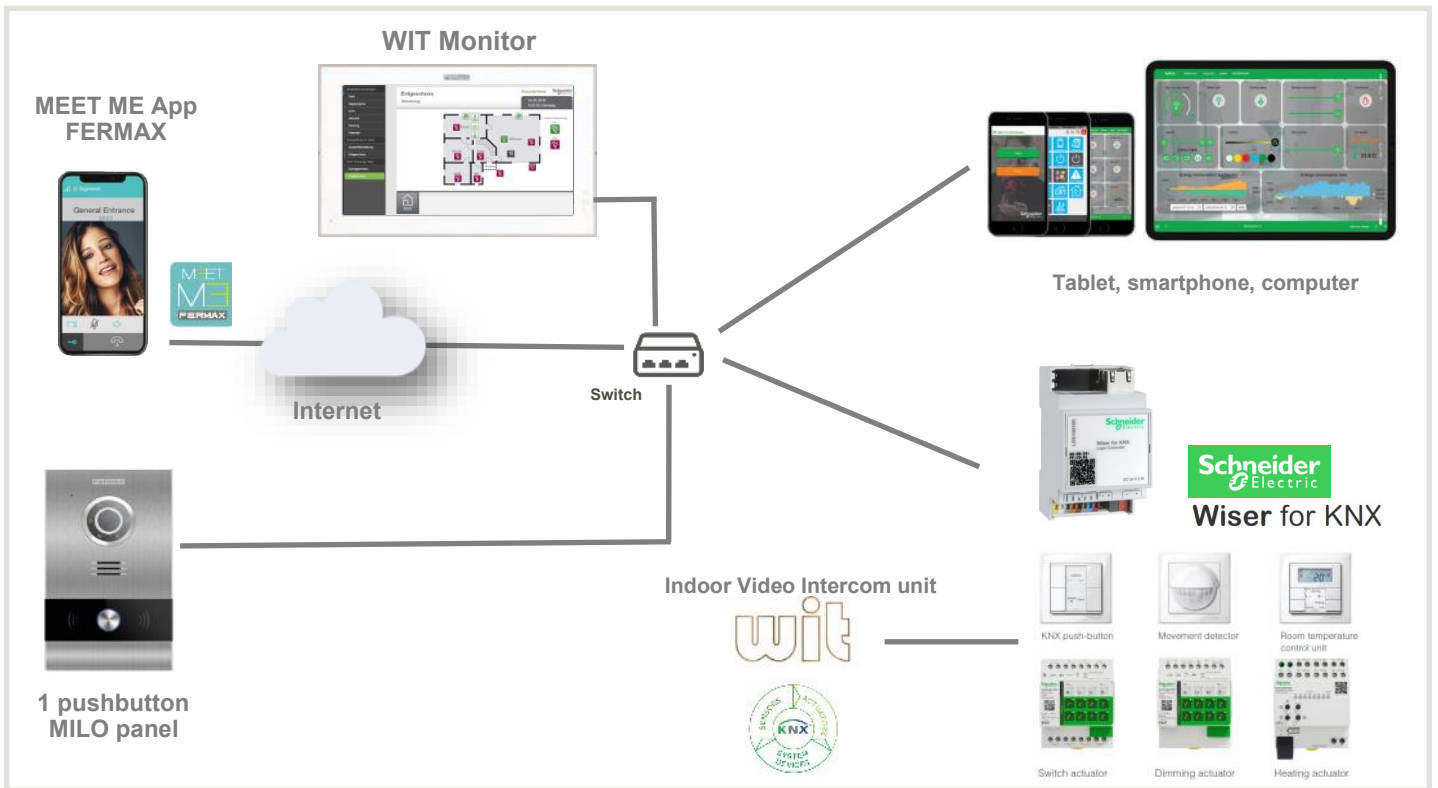
- Integration time and costs are dramatically reduced, due that there no SIP integration are required, so the Technical knowledge required to do the integration



- All specific residential video intercom functionalities are provided by FERMAX MEET system, which is designed to offer the best user experience for tenants and visitors.

- With the 10" WIT video monitor, building IP network and home local network are completely isolated thanks to its 2 RJx45 interfaces.

## INTEGRATION ARCHITECTURE



In the same way the home automation can be controlled using smartphones or tablets, Schneider W4K Inside App can be used in the WIT monitor, since it is Android 10 based. In this way we can provide a fixed and centralised control device in the installation.

WIT monitor can interact easily with Schneider Wiser for KNX gateway, which is the main link with the home automation devices at home.

WIT monitor is available in white and black colour and there is a smaller version of 7" in case it fits better into the project than the 10" version.



## INSTALLATION REMARKS

The APP installation on the monitor is done by a certification process, where the APP to be installed on the monitor must be sent and be certified by FERMAX so it can be installed through IP to all monitors.

Interoperability is based exclusively on Schneider WISER for KNX Gateway v2.5.1 or higher (previously named HomeLynk) and v1.0.10 W4K Inside or FERMAX INTEGRA app. For other product versions please contact our Technical Support. With the WIT monitor Android 10, the **TOUCH 3 mode is compatible**.

## WHY FERMAX?

FERMAX is a worldwide reference in the video intercom industry. The products have been installed in the most emblematic projects in the world. FERMAX Distribution network, which is present in more than 70 countries, will provide the best Support and assistance.

## MEET PRODUCT REFERENCE NUMBERS



WIT 7" Y 10" INDOOR MONITORS



ref.9533

MILO 1 PUSHBUTTON  
OUTDOOR PANEL



ref.953303



MEET ME  
CALL DIVERT



KIN PANEL



MARINE PANEL



## PANELS

- 9531 MILO DIGITAL VIDEO PANEL MEET
- 9532 MILO TOUCH VIDEO PANEL MEET  
Panel: 155x380x48mm. 1,2 Mpx
- 9536 DIRECTORY MILO PANEL MEET  
Flush box 143x357x58mm. Flush box not included.
- 9542 MILO PANEL FLUSH BOX- L MEET  
Flush box 143x357x58mm
- 9517 MILO DIGITAL PANEL SURFACE BOX MEET  
Flush box: 160x387x66-108mm
- 9533 1/W MILO VIDEO PANEL MEET
- 9534 1/W MILO VIDEO PANEL WITH PROX MEET
- 953303 1/W MILO VIDEO BLACK PANEL MEET  
Panel: 118x183x49mm. 1 Mpx.
- 9535 MEET PROXIMITY READER  
Panel: 118x183x49mm.
- 9543 MEET PANEL FLUSH - S  
Flush box: 105x172,5x63mm
- 1455 MARINE DIGITAL VIDEO PANEL MEET  
155x 410x 49mm
- 1459 MARINE PANEL FLUSH BOX MEET  
141x394x60mm
- 1445 KIN TOUCH PANEL MEET  
Panel: 185x405x50 mm
- 1449 KIN PANEL FLUSH BOX MEET  
Panel: 170x382x58 mm

## FERMAX INTERCOM INDOOR UNITS

- 14721 7" WIT MONITOR PoE WHITE
- 14723 7" WIT MONITOR PoE BLACK  
1 connector RJ-45. Dimensions: 212x132,5x20mm
- 14831 10" WIT MONITOR HOME AUTOMATION PoE WHITE
- 14833 10" WIT MONITOR HOME AUTOMATION PoE BLACK  
2 connectors R-J45. Dimensions: 270x168x20mm
- 1489 10" WIT MONITOR FLUSH BOX  
Dimensions: 255x155x50mm
- 9541 MIO/WIT MONITOR CONNECTOR  
Mounting support for the MIO/WIT monitor on the wall.  
Includes monitor connection cables.
- 1496 MEET ME LICENSE (CALL DIVERT)  
up to 8 simultaneous users with the same license



Ref.LSS100100 WISER FOR KNX v2.5.1 (or higher)